



...clearly the best.

Tek-ENTRY® Telephone Entry System

Specification Sheets Submittal Package

as of 12/30/2003

Website:
www.tektone.net

Email:
tektone@tektone.net

For Technical Assistance:
1-800-332-6608

Technical Assistance Email:
teksupt@tektone.net

277 Industrial Park Road
Franklin, NC 28734
(828) 524-9967
(800) 327-8466
Fax (828) 524-9968

4190 Fairview St., Unit B-8
Burlington, ON L7L 4Y8
Canada
(905) 333-0051
Fax (905) 333-0599

Copyright © 2001–2003 TekTone® Sound & Signal Mfg., Inc., All rights reserved.

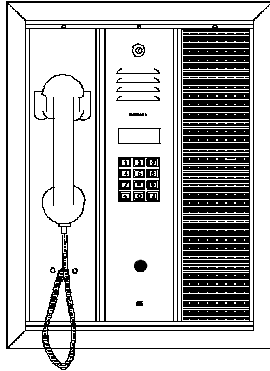
No part of these publications may be copied without the express written permission of TekTone® Sound & Signal Mfg., Inc. The contents of these specification sheets are furnished for informational use only, are subject to change without notice, and should not be construed as a commitment by TekTone® Sound & Signal Mfg., Inc. TekTone® Sound & Signal Mfg., Inc. assumes no responsibility or liability for any errors or inaccuracies that may appear in this documentation.

TekTone, the TekTone logo, Tek-Call, Tek-Care, Tek-Check-In, Tek-Com, Tek-Digicare, Tek-Door, Tek-Entry III, Tek-Guard, Tek-Micro, Tek-Micro II, Tek-MMARS II, Tek-NIOS, Tek-NIOS II, Tek-Paging, Tek-Phone, Tek-Safe, Tek-Select II, Tek-Sentry, Tek-Sound, Tek-Status and Tek-View are either registered trademarks or trademarks of TekTone® Sound & Signal Mfg., Inc. in the United States and/or other countries. All other trademarks are the property of their respective owners.

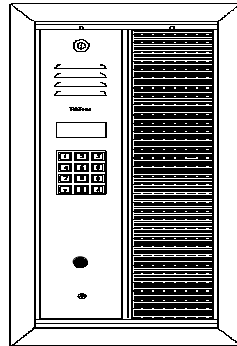


Tek-ENTRY® III Modular Series Telephone Entry Systems Specification Sheet

IL580
Section A
Rev. 5 - 05/2002



**TE905A/TE905ANP
with TA905, AM190D,
OF/OH193**



**TE905A/TE905ANP
with AM190D,
OF/OH192**

ARCHITECTS' AND ENGINEERS' SPECIFICATION

TekTone®'s Tek-ENTRY® III Modular Series Telephone Entry System is a complete automatic call and entry control system. The system operates on a standard dedicated telephone line and 110 VAC with 16 VAC transformer.

All units shall include integral power supply, panel-mounted PC board, metal telephone key pad, busy and door-open indication, postal release option, and speaker/microphone panel, or optional armored handset. The Tek-ENTRY® III Modular Series allows for a capacity of 1 - 750 suites, and may be configured for 7, 10, or 11 digit telephone numbers.

Tek-ENTRY® III Modular Series System shall provide a relay output for controlling doors, gates, elevators, etc., and shall be able to dial either rotary or touchtone. It shall also provide built-in capability for multiple entrances. Construction shall be of extruded anodized aluminum modular panels.

FEATURES

TekTone®'s Tek-ENTRY® III Modular Series Telephone Entry Systems are designed for easy operation. All models have a capacity of 1 - 750 suites, and may be configured for 7, 10, or 11 digit telephone numbers

By entering a simple 4-digit code, the system calls the correct phone number to allow access. The called party's phone number remains secret. Programming and re-programming are push button simple.

- 3-year warranty (control unit only)
- Use with rotary or touchtone service
- Memory retention during power failure (EEPROM)
- 26-bit Wiegand output to connect to card reader systems
- Toll restrictor
- Front-panel or remote programming
- Tamper-proof programming security
- Aluminum construction resists vandalism
- Unbreakable Lexan® Directory Window*
- Selectable 1 - 9 minute talk time limit

SPECIFICATIONS

Dimensions: Height: 19" (483 mm)
Width: refer to IL312 housing chart
Depth: .875" flush-mounted (22 mm)
Construction: Anodized extruded aluminum
Power Required: 110 VAC with SS106 Transformers

REQUIRED COMPONENTS

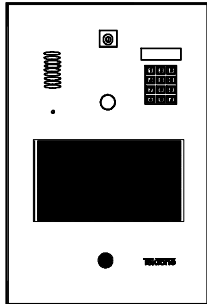
AM190D	Directory Panel (60 name max each)
OF190 Series	Frame
OH190 Series	Housing
SS106	Transformer (2 required)
TE905A	Modular Telephone Entry Panel
-or-	
TE905ANP	No Phone Line version Telephone Entry Panel

* Note: Lexan® is a Registered Trademark of the General Electric Corporation.

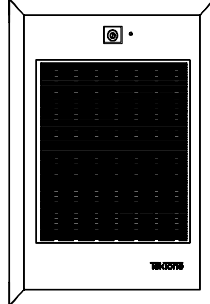


Tek-ENTRY® III Series Telephone Entry Systems Specification Sheet

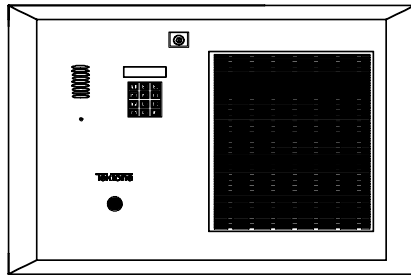
IL561
Section A
Rev. 7 - 05/2002



TE903A, TE903AV, TE903ANP
Baked Enamel Finish



AM903D
Expansion Directory



TE904 — Stainless Steel Finish

ARCHITECTS' AND ENGINEERS' SPECIFICATION

TekTone®'s Tek-ENTRY® III Series Telephone Entry System is a complete automatic call and entry control system. The system operates on a standard dedicated telephone line and 110 VAC with 16 VAC transformer. All units shall be surface mounted and constructed of 16 gauge steel and shall include a zinc die-cast marine quality keypad, optional handset or speaker/microphone, postal release option, and an RJ Plug Connector. The Tek-ENTRY® III Series allows for 1-750 suites with 7, 10 or 11 digit phone numbers.

Tek-ENTRY® III Series Model TE903A with baked enamel finish shall include an integral 100 name directory with a Lexan® window.* For additional directory space, the AM903D Expansion Directory may be added for an additional 200 names. The TE903AV shall include a black and white video camera. The TE903AVC shall include a color camera. The TE903ANP shall operate without a telephone line. Tek-ENTRY® III Series Model TE904 with stainless steel finish shall include the same options as TE903A, but shall include an integral 200 name directory.

FEATURES

TekTone®'s Tek-ENTRY® III Series Telephone Entry Systems are designed for easy operation and have a capacity of 1-750 suites 7, 10 or 11 digit phone numbers.

- Weather and vandal resistant construction
- Can be used with either rotary or touchtone service
- Memory retention during power failure (EEPROM)
- Programmable system master code
- Door timer cut-off feature
- Night service feature redirects all calls to guard station
- Optional handset operation
- Multiple entrance capability
- 26-bit Wiegand output to connect to card reader systems
- Secondary relay output
- Fire alarm input for emergency door release
- Unbreakable Lexan® directory window*
- Model TE903A — Baked Enamel Finish
- Model TE904 — Stainless Steel Finish
- Model TE903AV — Black and White Video Camera
- Model TE903AVC — Color Video Camera
- Model TE903ANP — No Phone Line version

SPECIFICATIONS

Dimensions:	TE903A	11"W × 16"H × 2.65"D
	TE904	19"W × 13"H × 2.75"D
	AM903D	11"W × 16"H × 2.65"D
Construction:	16-gauge Steel (TE903A/AV/AVC/ANP) Stainless Steel (TE904/AM903D)	
Power Required:	110 VAC with SS106 Transformer (16 VAC) TE903AV/AVC also require a 12 VDC 100mA	
Mounting:	Standard Surface	

REQUIRED COMPONENTS

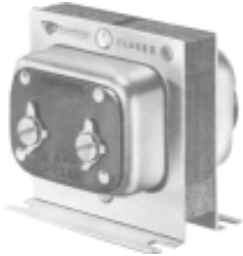
SS106	Transformer (2 required)
TE903A/AV/AVC	Baked Enamel Finish Entry Panel
TE904	Stainless Steel Finish Entry Panel
TE903ANP	No Phone Line Entry Panel
PM900	No Phone Line Control Unit & Cabinet (for TE903ANP only)

* Note: Lexan® is a Registered Trademark of the General Electric Corporation.



**SS102A, SS105B, SS106 Transformers
SS250 Transformer
PO001 Electric Door Opener
Specification Sheet**

**IL127
Section A
Rev. 9 - 07/2000**



SS102A



SS106

SS102A, SS106 TRANSFORMERS

TekTone®'s SS102A and SS106 Class 2 Transformers offer compact, easy-to-install low voltage AC power sources for use with various TekTone® intercom systems.

Both transformers are UL® Listed and will safely take themselves off line when overheated. The transformers are constructed for easy installation in a standard 1/2" knockout or for surface installations, and may be used in plastic or metal boxes.

Primary wire connections are made using the pre-stripped pigtails and ground wire; secondary connections are made using screw terminals.

SPECIFICATIONS

SS102A	120 VAC primary 16 VAC 10 VA secondary
SS106	120 VAC primary 8 VAC 20 VA 16/24 VAC 30 VA secondary



SS105B

SPECIFICATIONS

117-16 VAC 10 VA
Plug-in type; UL® Listed

SS105B TRANSFORMER

TekTone®'s SS105B Class 2 Plug-In Transformer was designed for quick and easy installation in environments where pigtail-type transformers are impractical or unsightly. It is particularly suitable for use in office or home installations, or in areas where the transformer must be exposed. The plug-in installation saves time and money over standard transformer installation requiring hand wiring and long runs from hard-to-get-at areas. TekTone®'s unit installs quickly and easily to existing outlets and includes an extra long replacement screw for secure attachment to a faceplate.



SS250

SS250 TRANSFORMER

TekTone®'s SS250 Power Transformer provides a low-voltage power source for use with the Tek-VIEW Video Intercom System. The transformer provides holes for surface mounting and features enclosed connections. Primary wire connections are made using pigtails; secondary connections are made using screw terminals.

SPECIFICATIONS

SS250 16 VAC 250 VA secondary
(used in video intercom application)



PO001

DIMENSIONS

Faceplate: 1-1/4" x 5-7/8"
(31.8mm x 149mm)
Case width: 15/16" (24mm)
Case depth: 1-7/16" (37mm)
Latch: 1-3/8" opening (35mm)

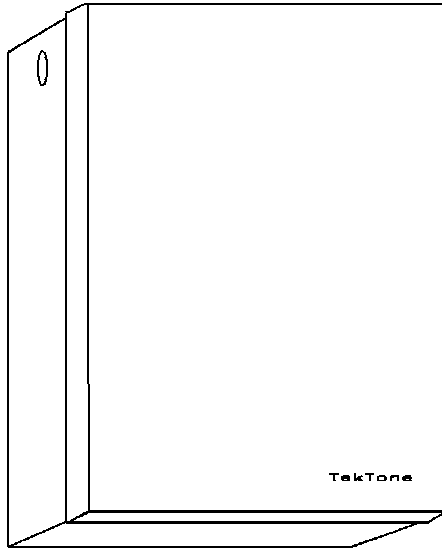
PO001 ELECTRIC DOOR OPENER

TekTone®'s PO001 Electric Door Opener is for use in unlocking and locking doors from a variety of TekTone® remote stations. The door opener can be installed in place of the door lock, or on a door jamb with various door lock sets. The PO001 is a normally locked type with heavy duty coils, and operates on 8-16 VAC or 3-6 VDC. The unit features a flat face with satin zinc finish and solid brass locking latch for long wear. Model PO001 is reversible for mortise-type locks and latches up to 1/2" width and throw and is ideal for most narrow jamb mortise-type installations. Depending on the specific job requirements, the PO001 can be reversed for right or left-hand door installation.



PM900 No-Telephone-Line Control Unit Specification Sheet

IL562
Section A
Rev. 4 - 01/2002



**PM900 No-Telephone-Line
Control Unit with Cabinet**
(for use with Tek-ENTRY®III Series)

ARCHITECTS' AND ENGINEERS' SPECIFICATION

TekTone®'s PM900 No-Telephone-Line Control Unit with Cabinet is for use with TekTone®'s Tek-ENTRY®III Series Telephone Entry Systems, for installation as a no-phone-line system.

For no-phone-line service capability, include all of the required components of a standard Tek-ENTRY®III Series System, plus: a PM900 Control Unit, IH996 Relay Board Cabinet (96 lines), RY912 Relay Board (1 per 12 lines), and a CT912 Connector Assembly (1 per RY912). All equipment should be located in the telephone room.

FEATURES

TekTone®'s PM900 Control Unit with Cabinet is designed to provide no-phone-line capability when interfaced with TekTone®'s Tek-ENTRY®III Series Telephone Entry Systems.

- Can be used with either rotary or touch-tone service
- No monthly line rental fee
- Provides intercom to front entrance for tenants that do not have outside telephone line service
- Distinctive double ring differentiates between visitor calls and incoming calls
- Connection for guard phone
- Multiple entrance capability
- Only two wires to interface with lobby equipment
- Call waiting feature
- DOC and FCC approved

SPECIFICATIONS

Dimensions: PM900 14.5"H × 10.5"W × 6.5"W
IH996 14.5"H × 10.5"W × 6.5"W
Power Required: 110 VAC with SS106 Transformer

REQUIRED COMPONENTS

CT912	Connector Assembly (1 per RY912)
IH996	Relay Board Cabinet (96 lines)
PM900	Control Unit (1000 lines)
RY912	Relay Board (1 per 12 lines)
SS106	Transformer
TE903/TE904	Stainless Steel Entry System
-or-	
TE903A	Enamel-coated Steel Entry System
-or-	
TE905	Modular Aluminum Entry System



Housings Reference Chart

Model #	IH101 backbox (flush)	IH102 ring (flush)	IH110R ring (flush)	IH357 ring IH358 box (flush)	IH400A housing (desk)	IH401 housing (desk)
IR100B	x	x			x	
IR102C	x	x			x	
IR103C	x	x			x	
IR104C	x	x			x	
IR105C	x	x			x	
IR141P	x	x			x	
IR141U	x	x			x	
IR143P	x	x			x	
IR203C					x	
IR204C					x	
IR205C					x	
IR207B	use standard 2-gang electrical box					
IR501B, IR510B	x	x			x	
IR704B/BD	x	x			x	
OR101	x	x				
OR500 Series	x	x				
OR600 Series	use standard 1-gang electrical box					
SM201B SM201K/P	use standard 1-gang electrical box				x	
SM401					x	
SM404			x			x
SM406			x			x
SM411			x			x
VM104				x		

NOTES:

1. For "SF" Series Emergency Switches, use single gang ring, or single gang ring and double gang box IH357/ IH358.
2. For "LI" Dome Light Series, use double gang ring (or double gang ring and box).
3. For "AM" and "CM" Series, see specification requirements.
4. For IR300 Series Nurse Call Stations, IR345B/IR145B Check-In Stations, and IR250-IR260A Series Stations, use Steel City #3GC and #H3BD or exact equivalent.
5. For IR150B Series, use Steel City #3GC and #H3BD. If space is limited, use ARC-CO #2GBD and #3GC.
6. For IR150SS Station use OH600 flush housing.

Dimension and Finish Chart—Housings, Frames, Desk Cabinets

Flush Mount Housings					
Model#	Overall Width	Wall Cutout Width	Overall Height	Wall Cutout Height	Overall Depth
IH101	4"	4-1/4"	5-1/2"	5-3/4"	1-3/4"
IH102	4-3/4"	4-1/4"	6"	5-5/8"	1/2"
IH110R	8-1/4"	8"	5-7/8"	5-5/8"	1-3/4"
OH150	5-1/4"	4-1/2"	11-1/8"	10-5/8"	3-7/8"
OH191	4-3/8"	4-1/2"	17-1/8"	17-1/4"	3-1/2"
OH1910	40-3/8"	40-1/2"	17-1/8"	17-1/4"	3-1/2"
OH192	8-3/8"	8-1/2"	17-1/8"	17-1/4"	3-1/2"
OH193	12-3/8"	12-1/2"	17-1/8"	17-1/4"	3-1/2"
OH194	16-3/8"	16-1/2"	17-1/8"	17-1/4"	3-1/2"
OH195	20-3/8"	20-1/2"	17-1/8"	17-1/4"	3-1/2"
OH196	24-3/8"	24-1/2"	17-1/8"	17-1/4"	3-1/2"
OH197	28-3/8"	28-1/2"	17-1/8"	17-1/4"	3-1/2"
OH198	32-3/8"	32-1/2"	17-1/8"	17-1/4"	3-1/2"
OH199	36-3/8"	36-1/2"	17-1/8"	17-1/4"	3-1/2"
OH201	5-3/8"	4-1/2"	16-7/8"	16-1/4"	3-7/8"
OH202	9-3/8"	8-1/2"	16-7/8"	16-1/4"	3-7/8"
OH203	13-3/8"	12-1/2"	16-7/8"	16-1/4"	3-7/8"
OH204	17-3/8"	16-1/2"	16-7/8"	16-1/4"	3-7/8"
OH205	21-3/8"	20-1/2"	16-7/8"	16-1/4"	3-7/8"
OH206	25-3/8"	24-1/2"	16-7/8"	16-1/4"	3-7/8"
OH207	29-3/8"	28-1/2"	16-7/8"	16-1/4"	3-7/8"
OH208	33-3/8"	32-1/2"	16-7/8"	16-1/4"	3-7/8"
OH209	37-3/8"	36-1/2"	16-7/8"	16-1/4"	3-7/8"
OH210	41-3/8"	40-1/2"	16-7/8"	16-1/4"	3-7/8"
OH600	4"	4-1/4"	10-3/16"	10-3/8"	1-13/16"
OH601	4"	4-1/4"	16-1/16"	16-1/4"	1-13/16"

Frames		
Model #	Width	Wall Cutout
OF191	6-1/4"	-
OF192	10-1/4"	-
OF193	14-1/4"	-
OF194	18-1/4"	-
OF195	22-1/4"	-
OF196	26-1/4"	-
OF197	30-1/4"	-
OF198	34-1/4"	-
OF199	38-1/4"	-
OF1910	42-1/4"	-
Height: 19" (overall)		
Depth: 7/8"		
OF201	6-1/4"	4-1/2"
OF202	10-1/4"	8-1/2"
OF203	14-1/4"	12-1/2"
OF204	18-1/4"	16-1/2"
OF205	22-1/4"	20-1/2"
OF206	26-1/4"	24-1/2"
OF207	30-1/4"	28-1/2"
OF208	34-1/4"	32-1/2"
OF209	38-1/4"	36-1/2"
OF210	42-1/4"	40-1/2"
Height: 17-3/4" (overall)		
Cutout: 15-7/8"		
Depth: 2-1/2"		

Surface Mount Housings	
Model #	Width
OH301	6-1/8"
OH302	10-1/8"
OH303	14-1/8"
OH304	18-1/8"
OH305	22-1/8"
OH306	26-1/8"
OH307	30-1/8"
OH308	34-1/8"
Height: 17-3/4"	
Depth: 3-5/8"	

Surface Mount Frames			
Model #	Width	Height	Depth
OF190S	4-1/4"	19-3/4"	1-1/2"
OF191S	6-1/4"	19"	2-1/4"
OF192S	10-1/4"	19"	2-1/4"
OF193S	14-1/4"	19"	2-1/4"
OF194S	18-1/4"	19"	2-1/4"
OF195S	22-1/4"	19"	2-1/4"
OF196S	26-1/4"	19"	2-1/4"
OF197S	30-1/4"	19"	2-1/4"
OF198S	34-1/4"	19"	2-1/4"
OF199S	38-1/4"	19"	2-1/4"
OF1910S	42-1/4"	19"	2-1/4"

Desk Cabinets		
Model #	Width	Depth
*IH302	9-1/2"	6"
*IH303	13-1/2"	6"
*IH304	17-1/2"	6"
*IH305	21-1/2"	6"
*IH306	25-1/2"	6"
IH400A	5"	7"
(white)		
IH401	7-1/8"	9-1/4"
* Cabinet Assembly Only.		
IH300 series Height = 17"		

NOTE: The last two digits of frame and housing model numbers indicate the number of gangs (i.e., panel capacity). Exceptions: IH101–IH110R.

Tek-ENTRY®III Telephone Entry System—Operating Instructions

A TekTone® Tek-ENTRY®III Telephone Entry System has been installed in your building to provide increased security for yourself and your family. The system provides communication and entry control using your telephone.

Your visitor will find your name and assigned dial code number on the directory near the Tek-ENTRY®III System.

When the visitor enters your dial code number, the Tek-ENTRY®III System will automatically ring your suite. You can answer from any telephone.

Answer the call and establish the identity of your visitor. The call will automatically cut off after a preprogrammed time period. You will hear a tone 10 seconds before the call is disconnected.

If you want to allow your visitor to enter, simply dial or press “9” on your telephone. This will unlock the entrance to your building or complex. You will hear a tone indicating the lock has been released. After hearing the tone, you may hang up.

To deny entry, simply hang up. Do not dial “9.”

If you are on the phone when a visitor calls you from the Tek-ENTRY®III System, they will get a busy signal unless you have “call waiting” service assigned to your telephone.

Optional Entry Code Use

If the box below is filled in, you have been assigned your own entry code. Entering this code on the Tek-ENTRY®III System keypad will allow you to enter the building without a key. When using this code, it is *not necessary* to pick up the handset. Press the “#” key, and then the four-digit number. Your code will not appear on the display.

#

IL579
Rev. 5 - 04/2002

Tek-ENTRY®III Telephone Entry System—Operating Instructions

A TekTone® Tek-ENTRY®III Telephone Entry System has been installed in your building to provide increased security for yourself and your family. The system provides communication and entry control using your telephone.

Your visitor will find your name and assigned dial code number on the directory near the Tek-ENTRY®III System.

When the visitor enters your dial code number, the Tek-ENTRY®III System will automatically ring your suite. You can answer from any telephone.

Answer the call and establish the identity of your visitor. The call will automatically cut off after a preprogrammed time period. You will hear a tone 10 seconds before the call is disconnected.

If you want to allow your visitor to enter, simply dial or press “9” on your telephone. This will unlock the entrance to your building or complex. You will hear a tone indicating the lock has been released. After hearing the tone, you may hang up.

To deny entry, simply hang up. Do not dial “9.”

If you are on the phone when a visitor calls you from the Tek-ENTRY®III System, they will get a busy signal unless you have “call waiting” service assigned to your telephone.

Optional Entry Code Use

If the box below is filled in, you have been assigned your own entry code. Entering this code on the Tek-ENTRY®III System keypad will allow you to enter the building without a key. When using this code, it is *not necessary* to pick up the handset. Press the “#” key, and then the four-digit number. Your code will not appear on the display.

#

IL579
Rev. 5 - 04/2002

Tek-ENTRY®III Telephone Entry System—Operating Instructions

A TekTone® Tek-ENTRY®III Telephone Entry System has been installed in your building to provide increased security for yourself and your family. The system provides communication and entry control using your telephone.

Your visitor will find your name and assigned dial code number on the directory near the Tek-ENTRY®III System.

When the visitor enters your dial code number, the Tek-ENTRY®III System will automatically ring your suite. You can answer from any telephone.

Answer the call and establish the identity of your visitor. The call will automatically cut off after a preprogrammed time period. You will hear a tone 10 seconds before the call is disconnected.

If you want to allow your visitor to enter, simply dial or press “9” on your telephone. This will unlock the entrance to your building or complex. You will hear a tone indicating the lock has been released. After hearing the tone, you may hang up.

To deny entry, simply hang up. Do not dial “9.”

If you are on the phone when a visitor calls you from the Tek-ENTRY®III System, they will get a busy signal unless you have “call waiting” service assigned to your telephone.

Optional Entry Code Use

If the box below is filled in, you have been assigned your own entry code. Entering this code on the Tek-ENTRY®III System keypad will allow you to enter the building without a key. When using this code, it is *not necessary* to pick up the handset. Press the “#” key, and then the four-digit number. Your code will not appear on the display.

#

IL579
Rev. 5 - 04/2002

Tek-ENTRY®III Telephone Entry System—Operating Instructions

A TekTone® Tek-ENTRY®III Telephone Entry System has been installed in your building to provide increased security for yourself and your family. The system provides communication and entry control using your telephone.

Your visitor will find your name and assigned dial code number on the directory near the Tek-ENTRY®III System.

When the visitor enters your dial code number, the Tek-ENTRY®III System will automatically ring your suite. You can answer from any telephone.

Answer the call and establish the identity of your visitor. The call will automatically cut off after a preprogrammed time period. You will hear a tone 10 seconds before the call is disconnected.

If you want to allow your visitor to enter, simply dial or press “9” on your telephone. This will unlock the entrance to your building or complex. You will hear a tone indicating the lock has been released. After hearing the tone, you may hang up.

To deny entry, simply hang up. Do not dial “9.”

If you are on the phone when a visitor calls you from the Tek-ENTRY®III System, they will get a busy signal unless you have “call waiting” service assigned to your telephone.

Optional Entry Code Use

If the box below is filled in, you have been assigned your own entry code. Entering this code on the Tek-ENTRY®III System keypad will allow you to enter the building without a key. When using this code, it is *not necessary* to pick up the handset. Press the “#” key, and then the four-digit number. Your code will not appear on the display.

#

IL579
Rev. 5 - 04/2002