

IDENTIFY MODEM SOFTWARE UTILITY FOR SPS

Copyright © 2000
All Rights Reserved

This document is protected by copyright, and may not be copied or adapted without the prior written consent of Sentex Systems. This document contains information proprietary to Sentex and such information may not be distributed without the prior written consent of Sentex. SPS software as related to this document also contains information proprietary to Sentex and is protected by copyright.

Sentex Systems
Chatsworth, Ca

Visit us at www.sentexsystems.com

IDENTIFY MODEM SOFTWARE UTILITY FOR SPS

This manual contains information on installing, activating, and using Identify Modem software.

NOTE: SPS is not a Windows program. It runs under DOS or in a DOS window. The initialization procedure automatically installs SPS and supporting files into the directory you specify. This is the same directory as the Identify Modem (ID-Modem) Utility Program. The default is C:\SENTEX\SPS. **If you have an old version of SPS installed, you may install the new version which includes Identify Modem over the old version, or you may move the old version of SPS to a separate directory.**

WHAT IS IDENTIFY MODEM SOFTWARE?

Identify Modem software searches your computer's COM ports in order to detect a modem and generate initialization commands to be used by Sentex Programming Software (SPS). Normally, you will only run this program before you run SPS for the first time. You will only need to run the program again if you change modems or change the COM port of your present modem.

WHAT DO YOU NEED TO USE IDENTIFY MODEM SOFTWARE?

To use Identify Modem Software, you will need the following items:

- An IBM PC-Compatible computer running Windows version 3.1, 3.11, or Windows 95.
- A hard disk drive with at least 3 MB of Free Space.
- A VGA (or better) monitor.
- A modem installed on your computer.
- Sentex Programming Software (SPS) (included on these disks).

INSTALLING IDENTIFY MODEM SOFTWARE IN WINDOWS 3.1 OR 3.11

In order for Identify Modem to operate properly, it must be installed onto your computer's hard disk drive. Identify Modem cannot be executed directly from the diskette. To install Identify Modem Software, use the following steps:

1. Place your Identify Modem diskette #1 into drive A (or drive B).
2. Start Windows.
3. From the Program Manager, pull down the File menu and choose Run.
4. In the Command Line box, type **A:\SETUP** (or **B:\SETUP** if you are using drive B) and click on the "OK" button.
5. Follow the on-screen prompts as they are shown on your display.

INSTALLING IDENTIFY MODEM SOFTWARE IN WINDOWS 95

1. Place your Identify Modem diskette #1 into drive A (or drive B).
2. Start Windows 95.
3. From the taskbar, click the start button, point to Settings on your desktop, then click on Control Panel.
4. From the Control Panel window, double click on Add/Remove Programs.
5. From the Add/Remove Programs screen under the Install/Uninstall tab, click Install.
6. Follow the on-screen prompts as they are shown on your display.

ACTIVATING THE IDENTIFY MODEM SOFTWARE PROGRAM

To activate the Identify Modem program Double click on the “Identify Modem” icon in Windows. The first screen is then displayed (See Figure 1).

Each time you activate the Identify Modem program, the first screen (Figure 1) will appear. The first screen consists of three panels where messages are displayed during the modem search and initialization; three corresponding simulated lamps which turn green as the modem search and initialization progress; a text box which displays the results of the modem search and initialization; a prompt line which prompts you what to do next; and three buttons (Automatic, Interactive and Quit), which you press to activate and quit the program.

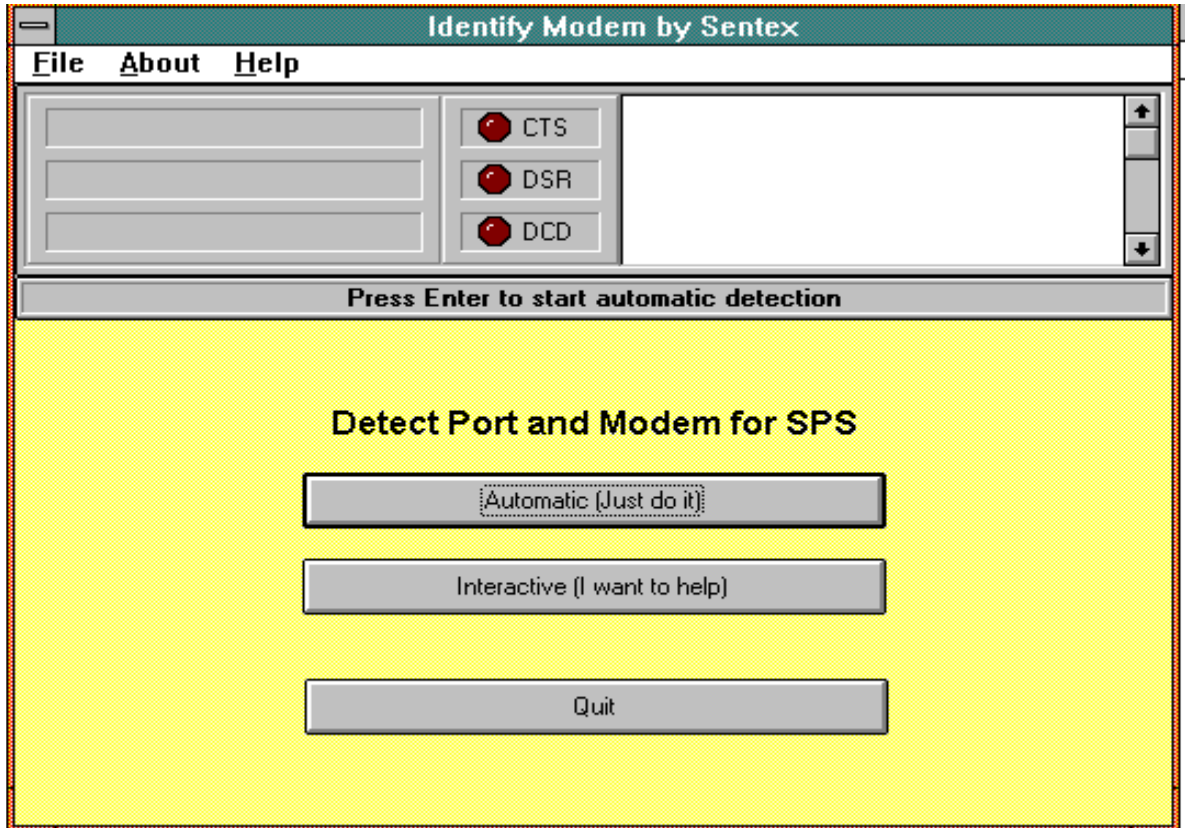


Figure 1 - The First Screen

USING IDENTIFY MODEM SOFTWARE

There are two basic modes of operation in the program: Automatic (just do it) and Interactive (I want to help). Each is represented by a button on the first screen (See Figure 1). To activate either mode you press the appropriated button as described below.

1. **Automatic Modem Detection:** When the first screen appears you are prompted to “Press Enter to start automatic modem detection.” If you are using a mouse, click on the Automatic button by pressing the left mouse button.

The program searches your COM ports for a modem. If it finds a modem, a message “Found Modem” appears on the middle panel; the lamps turn green; the COM port, the initialization command, and the modem speed appear in the text box; and the Display Modem Results dialog box appears on the screen.

If the program fails to find a modem, the message “No Modem Found” appears in the text box. If no modem is found, you are automatically switched to the Interactive screen where you can manually search for a modem.

To quit this screen, press the Tab key until the Quit button is highlighted, then press Enter. If you are using a mouse, click on the Quit button by pressing the left mouse button.

2. **Interactive Modem Detection:** When you choose the Interactive button, you have the option of selecting a COM port, identifying the brand of your modem, testing your modem’s initialization command, and/or setting your modem’s speaker volume (See Figure 2). Use the following buttons to select these options:

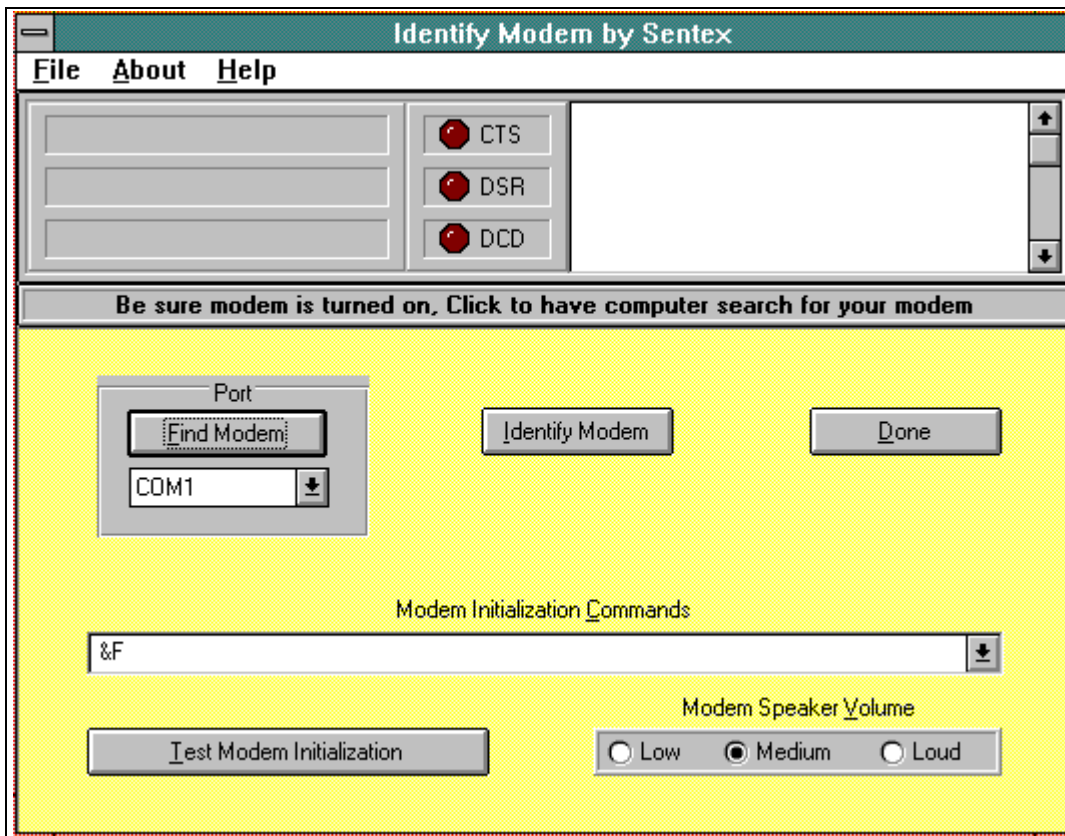


Figure 2. Interactive Screen

Find Modem button - Use this button to have the program attempt to locate your modem's COM port. Press the Tab key until the Find Modem button is highlighted, then press Enter. If you are using a mouse, click on the Find Modem button by pressing the left mouse button. You can also choose a COM port from the drop-down list beneath the Find Modem button by clicking on the down (↓) arrow. Press Enter on the highlighted selection or, if you are using a mouse, click on the COM port of your choice by pressing the left mouse button.

Identify Modem Button - Use this button to have the program attempt to identify the brand of modem used by your computer. This button can be used only after a COM port has been found or selected.

When the program finds a modem, “Found Modem” is displayed in the middle panel; the modem speed, the initialization command, and the selected COM port are displayed in the text box. and a drop-down list which includes the highlighted modem brand and the initialization commands appears at the bottom of the screen.

Press the Tab key until the Identify Modem button is highlighted, then press Enter. If you are using a mouse, click on the Identify Modem button by pressing the left mouse button.

Test Modem Initialization Button - Use this button to test your modem's initialization command. Press the Tab key until the Test Modem Initialization button is highlighted, then press Enter. If you are using a mouse, click on the Test Modem Initialization button using the left mouse button.

The initialization command appears in the text box and the Modem Initialization Commands drop-down list. The message "Modem response OK" appears on the prompt line.

If any portion of the initialization command string is not recognized by your modem "Modem error, edit commands then test again" appears on the prompt line. You can manually edit your initialization command in the "Modem Initialization Commands" drop-down list on the Interactive screen (See Figure 2).

Modem Speaker Volume - Use this button to set the volume of dial tone, ring back, or busy signal when your modem is calling. Use the left (←) or right (→) arrow keys to select the Low, Medium, or Loud option, then press Enter. If you are using a mouse, click on the Low, Medium, or Loud buttons by pressing the left mouse button.

Done button - Use this button to exit the program. Press the Tab key until the Done button is highlighted, then press Enter. If you are using a mouse, click on the Done button by pressing the left mouse button. A dialog box appears asking "Save settings for use by SPS?" Press the Tab key to highlight either Yes or No depending on your choice, then press "Enter." If you are using a mouse, click on the Yes or No buttons by pressing the left mouse button.

USING ON-LINE HELP

To receive assistance on the screen, make sure that the cursor or the highlighted bar is located in that area and press the "F1" key on your computer's keyboard. Identify Modem will then display the Help topic for the selected area in a Help Window. Once you have read the Help Window and you wish to return to the setup area you were working on, Double click on the Exit selection of the File menu.

NOTE: Refer to your SPS User's Guide for instructions on using SPS.