



Engineering Excellence!

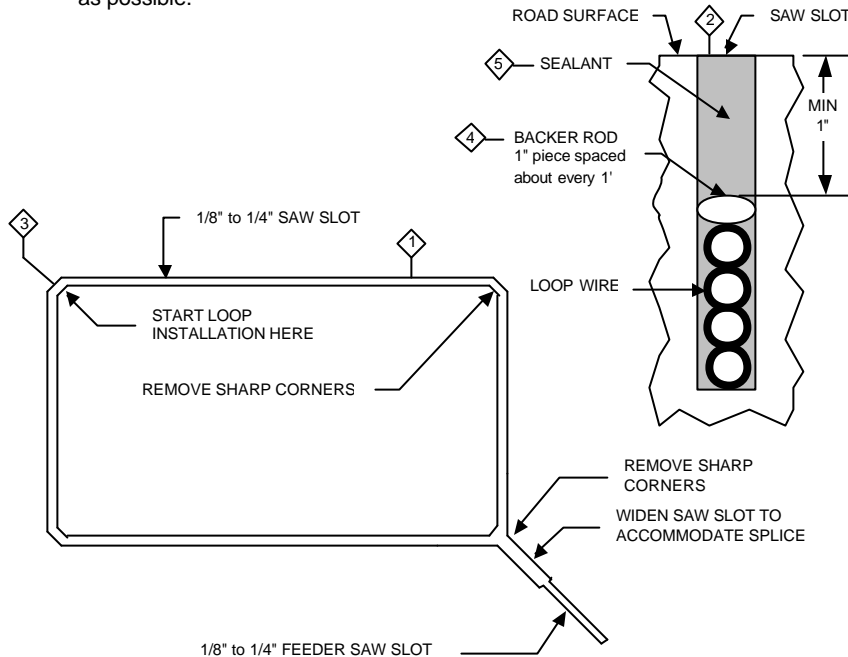
Reno A & E

4655 Aircenter Circle
Reno, NV 89502-5948 USA
Telephone: (775) 826-2020
Fax: (775) 826-9191
Website: www.renoae.com
E-mail: contact@renoae.com



Loop Installation - Preformed Saw Cut Type

- 1 Mark the loop layout on the pavement. A string that is the same length as the perimeter of the loop can be used as a guide. Be aware that sharp inside corners can damage the loop wire insulation.
- 2 Set the saw to cut to a depth (typically 2" to 2.5") that insures a minimum of 1" from the top of the wire to pavement surface. The saw cut width should be larger than the wire diameter to avoid damage to the wire insulation when placed in the saw slot. Cut the loop and feeder slots. Remove sharp inside corners. Remove all debris from the saw slot with compressed air. Check that the bottom of the slot is smooth.
- 3 Starting at the splice in the preformed loop, flatten the loop portion of the wire to find the center of the loop opposite of the splice. Install the loop starting at the point directly opposite of the feeder saw slot and work your way to the splice saw slot using a wood stick or roller to insert the wire to the bottom of the saw slot (do not use sharp objects). You should have an equal amount of four-conductor loop wire on each side of the loop as you approach the splice. If not, slide the loop in the saw slot to match the wire lengths. Place the splice in the splice saw slot and then place the lead-in wire in the feeder saw slot.
- 4 The wire must be held firmly in the slot with 1" pieces of backer rod every 1 to 2 feet. This prevents the wire from floating when the loop sealant is applied.
- 5 Apply the sealant. The sealant selected should have good adhering properties with contraction and expansion characteristics similar to those of the pavement material. Special care should be used where the loop saw slot and splice saw slot meet to insure that this area has no air pockets and that the wire is as deep in the saw slot as possible.



Preformed Loop Saw Cut Installation 02-21-02.doc



Engineering Excellence!

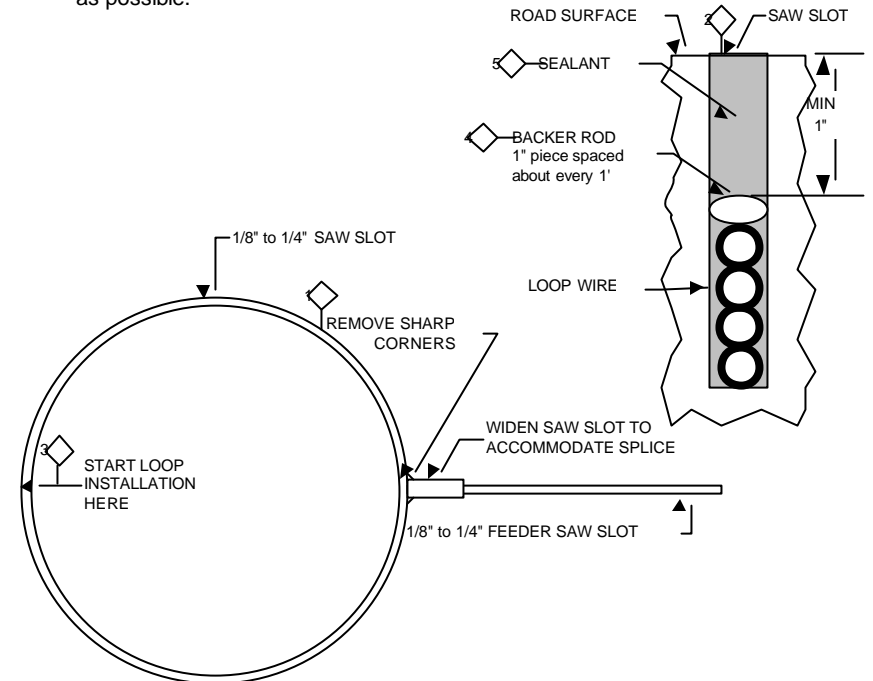
Reno A & E

4655 Aircenter Circle
Reno, NV 89502-5948 USA
Telephone: (775) 826-2020
Fax: (775) 826-9191
Website: www.renoae.com
E-mail: contact@renoae.com



Loop Installation - Preformed Circular Saw Cut Type

- 1 Mark the loop layout on the pavement. Be aware that sharp inside corners can damage the loop wire insulation.
- 2 Set the saw to cut to a depth (typically 2" to 2.5") that insures a minimum of 1" from the top of the wire to pavement surface. The saw cut width should be larger than the wire diameter to avoid damage to the wire insulation when placed in the saw slot. Cut the loop and feeder slots. Remove sharp inside corners. Remove all debris from the saw slot with compressed air. Check that the bottom of the slot is smooth.
- 3 Starting at the splice in the preformed loop, flatten the loop portion of the wire to find the center of the loop opposite of the splice. Install the loop starting at the point directly opposite of the feeder saw slot and work your way to the splice saw slot using a wood stick or roller to insert the wire to the bottom of the saw slot (do not use sharp objects). You should have an equal amount of four-conductor loop wire on each side of the loop as you approach the splice. If not, slide the loop in the saw slot to match the wire lengths. Place the splice in the splice saw slot and then place the lead-in wire in the feeder saw slot.
- 4 The wire must be held firmly in the slot with 1" pieces of backer rod every 1 to 2 feet. This prevents the wire from floating when the loop sealant is applied.
- 5 Apply the sealant. The sealant selected should have good adhering properties with contraction and expansion characteristics similar to those of the pavement material. Special care should be used where the loop saw slot and splice saw slot meet to insure that this area has no air pockets and that the wire is as deep in the saw slot as possible.



Preformed Loop Saw Cut Installation 02-21-02.doc



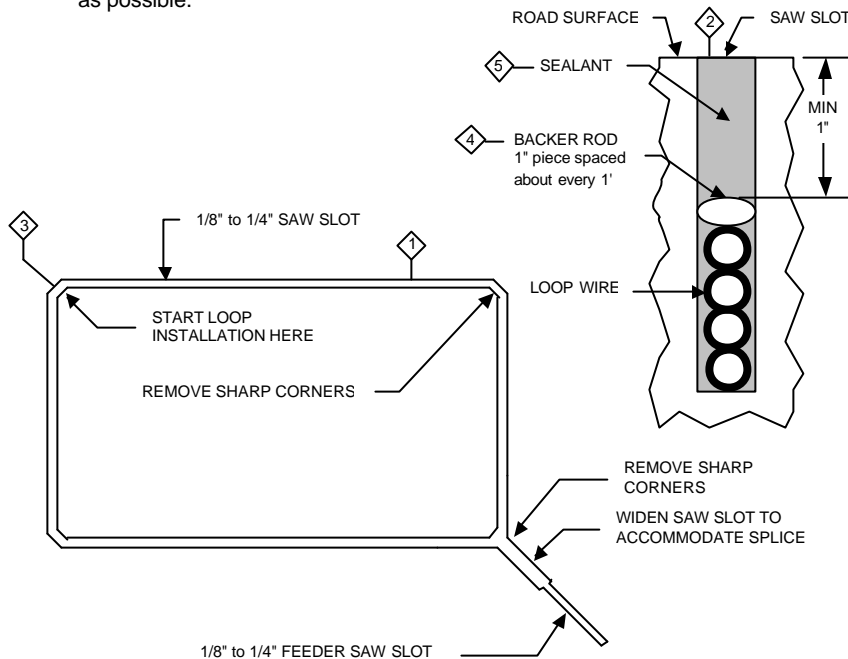
Engineering Excellence!

Reno A & E
4655 Aircenter Circle
Reno, NV 89502-5948 USA
Telephone: (775) 826-2020
Fax: (775) 826-9191
Website: www.renoae.com
E-mail: contact@renoae.com



Loop Installation - Preformed Saw Cut Type

1. Mark the loop layout on the pavement. A string that is the same length as the perimeter of the loop can be used as a guide. Be aware that sharp inside corners can damage the loop wire insulation.
2. Set the saw to cut to a depth (typically 2" to 2.5") that insures a minimum of 1" from the top of the wire to pavement surface. The saw cut width should be larger than the wire diameter to avoid damage to the wire insulation when placed in the saw slot. Cut the loop and feeder slots. Remove sharp inside corners. Remove all debris from the saw slot with compressed air. Check that the bottom of the slot is smooth.
3. Starting at the splice in the preformed loop, flatten the loop portion of the wire to find the center of the loop opposite of the splice. Install the loop starting at the point directly opposite of the feeder saw slot and work your way to the splice saw slot using a wood stick or roller to insert the wire to the bottom of the saw slot (do not use sharp objects). You should have an equal amount of four-conductor loop wire on each side of the loop as you approach the splice. If not, slide the loop in the saw slot to match the wire lengths. Place the splice in the splice saw slot and then place the lead-in wire in the feeder saw slot.
4. The wire must be held firmly in the slot with 1" pieces of backer rod every 1 to 2 feet. This prevents the wire from floating when the loop sealant is applied.
5. Apply the sealant. The sealant selected should have good adhering properties with contraction and expansion characteristics similar to those of the pavement material. Special care should be used where the loop saw slot and splice saw slot meet to insure that this area has no air pockets and that the wire is as deep in the saw slot as possible.



Engineering Excellence!

Reno A & E
4655 Aircenter Circle
Reno, NV 89502-5948 USA
Telephone: (775) 826-2020
Fax: (775) 826-9191
Website: www.renoae.com
E-mail: contact@renoae.com



Loop Installation - Preformed Circular Saw Cut Type

1. Mark the loop layout on the pavement. Be aware that sharp inside corners can damage the loop wire insulation.
2. Set the saw to cut to a depth (typically 2" to 2.5") that insures a minimum of 1" from the top of the wire to pavement surface. The saw cut width should be larger than the wire diameter to avoid damage to the wire insulation when placed in the saw slot. Cut the loop and feeder slots. Remove sharp inside corners. Remove all debris from the saw slot with compressed air. Check that the bottom of the slot is smooth.
3. Starting at the splice in the preformed loop, flatten the loop portion of the wire to find the center of the loop opposite of the splice. Install the loop starting at the point directly opposite of the feeder saw slot and work your way to the splice saw slot using a wood stick or roller to insert the wire to the bottom of the saw slot (do not use sharp objects). You should have an equal amount of four-conductor loop wire on each side of the loop as you approach the splice. If not, slide the loop in the saw slot to match the wire lengths. Place the splice in the splice saw slot and then place the lead-in wire in the feeder saw slot.
4. The wire must be held firmly in the slot with 1" pieces of backer rod every 1 to 2 feet. This prevents the wire from floating when the loop sealant is applied.
5. Apply the sealant. The sealant selected should have good adhering properties with contraction and expansion characteristics similar to those of the pavement material. Special care should be used where the loop saw slot and splice saw slot meet to insure that this area has no air pockets and that the wire is as deep in the saw slot as possible.

