

# AeGIS 9000 Series Management Software

**AeGIS9000 Management System V5.0**

File Edit Setting

Comm Mode:  Modem  RS232

Welcome Message: [ ]

Select Port:  1  2  3  4

Phone Number: 4981456

MasterCode: 123456

Date: [ ] Time: [ ] END

Receive:

PAR	TNT
ACD	ATS
HLD	TMZ
EVR	ALL

Received Content

Send:

Message	DataBase		
Single	Multi	Pulse	Tone
NPBX	PBX	w/Cd	w/oCd
ClrAts	ClrTmz	ClrHld	ClrEvr
Clear Access Code	[ ]		
Clear Tenant	[ ]		
Card Fac.Code	[ ]		
CallHoldTime	[ ]		
Door1 Opentime	[ ]		
Door2 Opentime	[ ]		
LockOutCount	[ ]		
SystemID	[ ]		
ManualUnlockDoor1	[ ]		
ManualUnlockDoor2	[ ]		
Relay2Mode	[ ]		
PBX No	[ ]		
NewMasterCode	[ ]		

```

AT&F S37=5
OK
ATDT4981456
CONNECT 1200 NoEC
< Error >.. Illegal Command..
>rogramming> Access Granted
**** Events Report ****
DATE      TIME      SOURCE      CODE      ACTION/CAUSE
02/25/2002 14:41     Auto-Lock   00110     Scheduled action
02/25/2002 14:41     Postal Un lock 00000     Access Granted
02/25/2002 14:35     Auto-Lock   00110     Scheduled action
02/25/2002 14:34     Postal Un lock 00000     Access Granted
02/25/2002 14:06     Auto-Lock   00110     Scheduled action
02/25/2002 14:06     Postal Un lock 00000     Access Granted
02/25/2002 14:06     Access(Door 1) 09876     Access Granted
02/25/2002 13:00     Auto-Lock   00110     Scheduled action
02/25/2002 12:00     Postal Un lock 00000     Access Granted
02/25/2002 12:00     Postal Un lock 00000     Access Granted
02/25/2002 12:00     Postal Un lock 00000     Access Granted
02/25/2002 12:00     Postal Un lock 00000     Access Granted
02/25/2002 12:00     Postal Un lock 00000     Access Granted
02/25/2002 12:00     Postal Un lock 00000     Access Granted
02/25/2002 12:00     Postal Un lock 00000     Access Granted
02/25/2002 11:55     Postal Un lock 00000     Access Granted
  
```

Status: Receiving... Comm Number: 1 Send Record: 0 Setting: 1200,N,8,1 4:21:00 PM

March 01, 2002



Pach & Company  
[www.pach-co.com](http://www.pach-co.com)

941 Calle Negocio  
 San Clemente, CA 92673

Phone: 1-888-678-7224  
 Fax: 949-498-6879



# TABLE OF CONTENTS

## Limitations of Liability

<b>Chapter 1. Getting Started .....</b>	<b>1</b>
1.1. Introduction .....	1
1.2. Software Descriptions and Specifications .....	1
1.3. System Requirements .....	1
<b>Chapter 2. Software Installation .....</b>	<b>2</b>
2.1. Software Installation .....	2
2.2. Uninstall Software .....	3
<b>Chapter 3. Setting the Modem and RS-232 .....</b>	<b>4</b>
3.1. Modem .....	4
3.2. RS-232 .....	5
<b>Chapter 4. Creating a Database .....</b>	<b>7</b>
4.1.1. Creating a Tenant Database .....	7
4.1.2. Modifying an Existing Tenant Database .....	8
4.2.1. Creating a Tenant Access Code .....	8
4.2.2. Modifying an Existing Tenant Access Code .....	9
4.3.1. Creating an Auto Schedule Database .....	10
4.3.2. Modifying an Existing Auto Schedule Database .....	11
4.4.1. Creating a Holiday Database .....	11
4.4.2. Modifying an Existing Holiday Database .....	12
4.5.1. Creating a Time Zone Database .....	12
4.5.2. Modifying an Existing Time Zone Database .....	13
<b>Chapter 5. Understanding the Buttons and Menus .....</b>	<b>14</b>

## **LIMITATIONS OF LIABILITY**

This manual is subject to change without notice.

Pach and Company is not liable for any errors that might occur from use of this document, nor is it any commitment to update the information herein implied.

Pach and Company does not assume any liability for any damages, which may arise in installation or use of the AeGIS 9000 Management Software. Pach and Company does not assume liability for any incompatibility between the AeGIS 9000 Management Software and users devices.

Pach & Company does not responsible for any incompatibility between the Management Software and your devices.

Pach & Company reserves the right to make changes without prior notice to any products in order to improve reliability, function or design.

# Chapter 1

## GETTING STARTED

### 1.1 Introduction

Pach & Company thanks and congratulates you on the purchase of the most user friendly Telephone Entry Management Software in the market today. It is assumed you have at least an entry level knowledge in computer software.

The manual is designed to guide you through the proper use and the administration of your database. It is written base on Windows '95 and '99 operating systems. It is important for you to read and follow the manual completely.

### 1.2 Software Descriptions and Specifications

The AeGIS 9000 Series Management Software provides the user the ability to manage their AeGIS 9000 System database and parameter settings from a personal computer. All system database and parameters can be received or sent to the Aegis 9000 System via a personal computer (modem or RS-232).

#### Standard Features:

- Database Management includes Tenants Database, Access Codes Database, Auto Schedules Database, Holidays Database and Time Zones Database.
- Send and Receive Tenant's Database Remotely via a modem or Locally via an RS-232.
- Print Tenant's Database and Event Recording from your Personal Computer (PC)
- Event Recording with 1,200 events buffer capacity.
- Parameter Changes.
- Changing the System's Master Code.
- Support PBX.

### 1.3 System Requirements

Your computer system must have the following requirements to run the AeGIS 9000 Management Software.

- Windows'95 or '98 Operating Systems
- 486DX or Higher CPU Speed
- 16 MB RAM Minimum
- 250 MB Hard-Drive Minimum.
- Windows'95 or '98 Compatible Modem 1200 BPS or Faster.
- The modem must support V22 or Bell 212 protocol.
- Recommended Modem Brand ZOOM, SUPRAMAX or HAYES COMPATIBLE MODEM.

**WARNING:** PACH & COMPANY will not responsible for an incompatibility problem between your computer modem and the AeGIS Management Software.

# Chapter 2


## SOFTWARE INSTALLATION

The AeGIS 9000 Series come with the Software Compact Disc. Check the system requirements on Chapter 1 before installing the software.

### 2.1 Software Installation

**Step 1** Close all the running applications and insert the CD into the drive, the software will start automatically and screen shows as on figure 2.1. If the CD does not start automatically, follow the steps below

- Double click on **MY COMPUTER** Icon, then
- Double click the CD drive where the CD software is inserted.

- Double Click  the screen shows as on figure 2.1

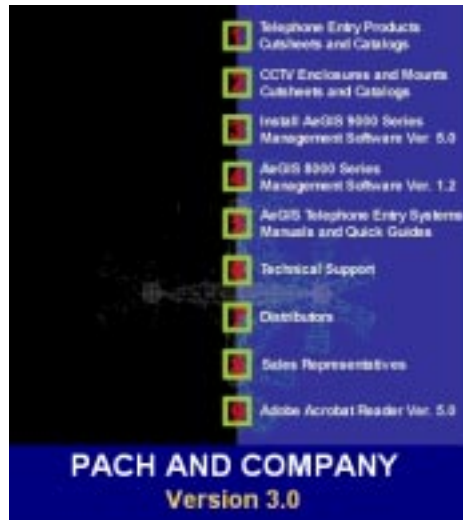


Figure 2.1

**Step 2** Click on **3** **Install AeGIS 9000 Series Management Software Ver 5.0** the screen shows as on figure 2.2

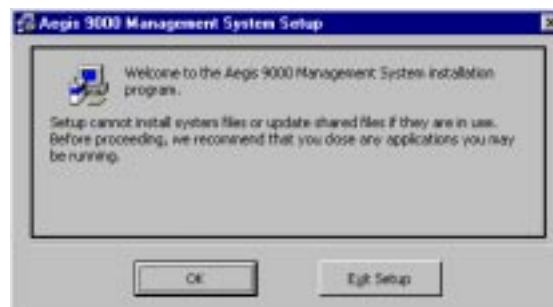


Figure 2.2

**Step 3** Click **[OK]** to continue the screen show as on figure 2.3 or **[Exit Setup]** to abort the installation.



**Figure 2.3**

**Step 4** Click this icon



to continue the screen shows as on figure 2.4 or click **[Exit Setup]** to abort.



**Figure 2.4**

**Step 5** Click **[Continue]**, the software is installed under AeGIS 9000 Management System the screen shows as on figure 2.5 if the installation is successfully or **[Cancel]** to abort the installation.



**Figure 2.5**

## 2.2 Uninstall Software

Use the Add/Remove Program at Control Panel to remove the AeGIS 9000 Management System.

# Chapter 3

## SETTING THE MODEM AND RS-232

The AeGIS 9000 Series can be program via Modem (remote) or RS-232 (local). If the RS-232 is used to program the system, you have to build the RS-232 cable, see the AeGIS 9000 Series Installation and Program Manual for pins configuration.

### 3.1 MODEM

Internal and external modem can be used with the software. Some modems may be incompatible with our software. Pach and Company will not responsible for incompatibility problem. **Recommended modem brand is ZOOM, SUPRAMAX or 1200 HAYES COMPATIBLE.**

**Step 1** Find the Comm Port where the modem is installed. Refer to the Computer Operating System owners manual to locate the modem port.

**Step 2** Open the AeGIS Management Software Program as shown on figure 3.1

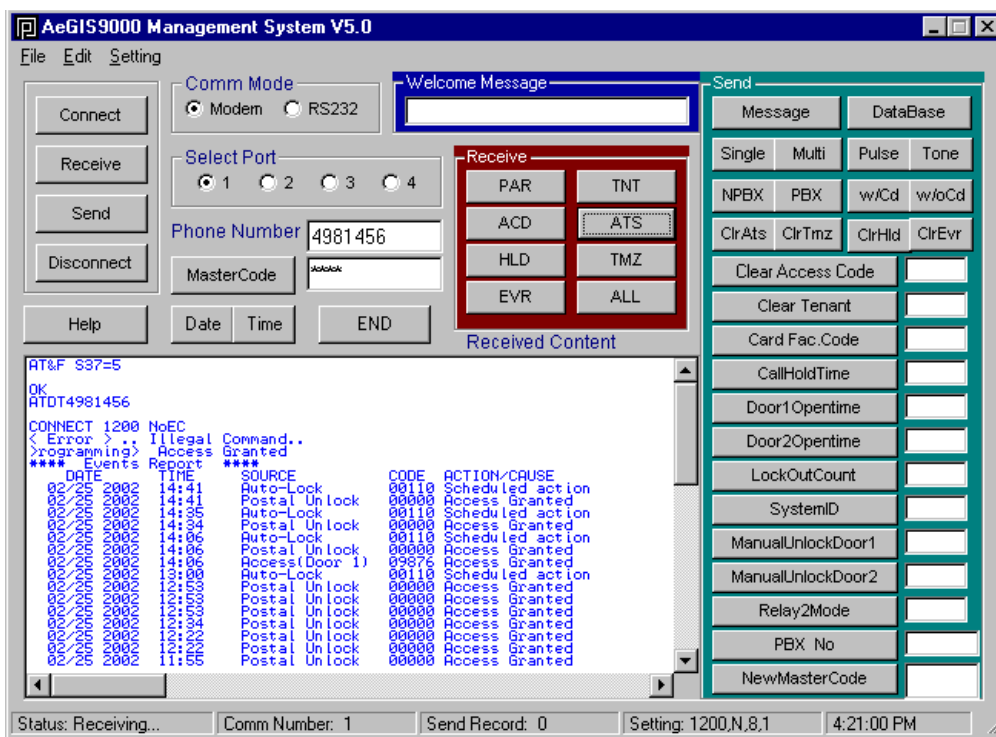
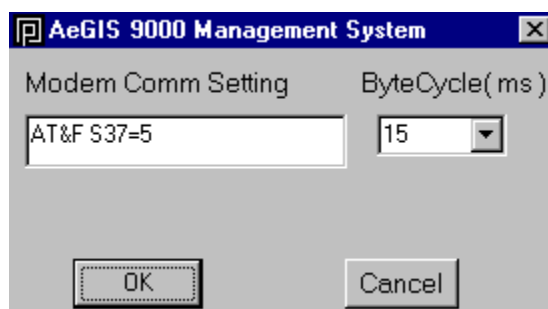


Figure 3.1

**Step 3** Select the Comm Mode to Modem as shown on figure 3.1.

**Step 4** Select the Port number (1-4).

**Step 5** Set the Modem Comm Setting String and Byte Cycle by clicking your mouse at **Setting Menu**, the screen shows as on figure 3.2.



**Figure 3.2**

- Modem Comm Setting:**
- 1) AT&F S37=5
  - 2) AT&FN0&Q0B0E1V1M1S37=5S9=4&D2&C1&S1
  - 3) AT&F+MR=1;+MS=V22
  - 4) AT&F S37=5S9=4+MS=V22
  - 5) AT S37=2
  - 6) AT +MS=1

**Step 6** Select one of the Modem Comm Setting String listed above. Set the Byte Cycle to 15 ms

**Step 7** Click **[OK]**

**Step 8** Click **[Connect]** and if the connection is successfully, the **Received Content Screen shows CONNECT 1200 or CONNECT 12 NoEC**. If more than one AeGIS 9000 Series are connected on the same phone line, the **Received Content Screen** shows scrolling ASCII characters.

**Step 9** **Enter the master code in the Master Code box** (default 0000) **then** Click **[Master Code]** if the Received Content Screen shows <Error>... Illegal Command.. , click **[Master Code]** again and the Received Content Screen shows <Programming> Access Granted. **Warning:** You may have to send the Master Code more than once if more than one AeGIS 9000 Series are connected on the same phone line.

**Step 10** Click **[Disconnect]** to disconnect the connection.

## 3.2 RS-232

The computer must have an RS-232 port with DB9 or DB25. The RS-232 connector is not supplied by Pach and Company. **You must select Function Code 27 to RS-232 on the AeGIS 9000 Series**, see AeGIS 9000 Series Installation and Program Manual.

**Step 1** Find the Comm Port where the RS-232 port is installed. Refer to the Computer Operating System owners manual to locate the RS-232 port.

**Step 2** Connect the RS-232 cable between the AeGIS 9000 Series and the computer.

**Step 3** Open the AeGIS Management Software Program as shown on figure 3.3.

**Step 4** Select the Comm Mode to RS-232 as shown on figure 3.3.

**Step 5** Select the Port number (1-4) as shown on figure 3.3.

**Step 6** Click **[Connect]** and if the connection is successfully, the Received Content Screen shows as on figure 3.3.

**Step 9** Click **[Master Code]** (default master code 0000) if the Received Content Screen shows <Error>... Illegal Command.. , click **[Master Code]** again and the Received Content Screen shows <Programming> Access Granted.

**Step 10** Click **[Disconnect]** to disconnect the connection.

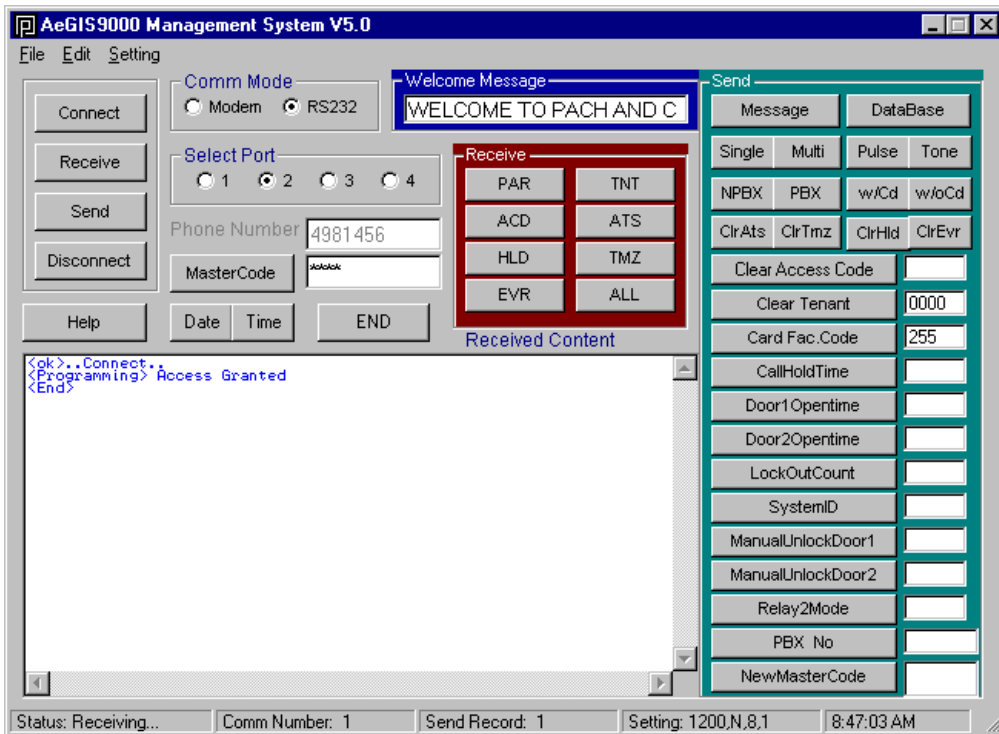


Figure 3.3

# Chapter 4

## CREATING A DATABASE

The programming the AeGIS 9000 database can be done via a Modem or RS-232. The system consists of **FIVE DATABASES: Tenant (TNT), Access Code (ACD), Auto Unlock Schedule (ATS), Time Zone (TMZ) and Holidays (HLD)**. Each Database has a unique extension. Tenant (\*.TNT), Access Code (\*.ACD), Auto Unlock Schedule (\*.ATS), Time Zone (\*.TMZ) and Holiday (\*.HLD). The software allows the user to save multiple file names under the same extension (i.e Apt1.TNT, Apt2.TNT or Apt1.ACD, Apt2.ACD). This is very useful if you manage multiple AeGIS 9000 systems for multiple facilities or if you do not want to SEND the whole database (i.e. tenant database), you may create a new tenant database and save it under a different file name and you only need to SEND the updated tenant database into the AeGIS 9000.

### 4.1.1 Creating a Tenant Database

A Tenant Database consists of the following: Tenant Directory (a unique non-duplicating two, three or four-digit code assigned for each tenant for identification, as an example a tenant apartment number), Tenant Telephone Number and Tenant Name. **Set Function Code 28 at the AeGIS 9000 Series according to the number of directory digit program on a tenant database (must be done at the Lobby Panel)**. You must follow the programming rules:

- Directory Numbers cannot be duplicated.
- Tenant Directory numbers of digits used on the Management Software must be match with the number of Directory digit on the AeGIS 9000 System (Function Code 28).
- Tenant Telephone Numbers up to 11-digit or 4-digit for non subscriber system.
- Tenant Name must be 12 characters or less.
- The software does not need to be connected.

**Step 1** Click on **File** menu then select **New File** and select on **Tenant Database** as shown on figure 4.1, then the screen shows as on figure 4.2.



Figure 4.1

**Step 2** Enter a **Tenant Directory** (2, 3 or 4-digit) then press **<Tab>**

**Step 3** Enter a **Tenant Telephone Number** (up to 11-digit) or the **4-digit relay** number for non-subscriber system then press **<Tab>**

**Step 4** Enter a **Tenant Name** (up to 12-characters) then press **<Enter>**, the screen shows as on figure 3.3.

**Step 5** Return to step 2 to program another tenant or click **[Save As]**, the screen shows as on figure 4.4 ( your screen may not be the identical). The file is saved under \*.TNT extension.

**Step 6** Type a file name and select a folder where you want to save the tenant database file then click **[Save]**.

**Step 7** Click **[Print]** to print or **[Quit]** to return to main screen.



**Figure 4.2**



**Figure 4.3**



**Figure 4.4**

## 4.1.2 Modifying an Existing Tenant Database

**Step 1** Click **File** menu and then click **Open Send File** as shown on figure 4.5.



Figure 4.5

**Step 2** Open an existing tenant database file to be modified and the screen shows as on figure 4.6



Figure 4.6

**Step 3** **Modify a tenant database** consists of

- **Adding a new tenant(s)**, input the tenant information in the text box and press **[Enter]**, then save the file or
- **Edit an existing tenant name**, drag the mouse into the field need to be edited and type the a new one. Make sure the format does not change (keep the same space between the fields), then save the file.

**Step 4** Click **[Print]** to print or **[Quit]** to return to main screen.

## 4.2.1 Creating a Tenant Access Code

A tenant access code consists of Keypad Access Code and Card Access Code. You must follow the programming rules:

- An **Access Code** field must be program even though card is used to gain access.

- Directory Code is not needed.

**Step 1** Click on **File** menu then select **New File** and select on **Access Code Database** as shown on figure 4.1, then the screen shows as on figure 4.7.



**Figure 4.7**

**Step 2** Enter **4-digit Access Code** then press **<Tab>**

**Step 3** Enter **5-digit Card No. or transmitter No.** (leave this field blank if no card reader installed) then press **<Tab>**

**Step 4** Enter the **Time Period** (S1, S2, and S3) then press **<Tab>**

Time Period is linked to the Time Zone (TMZ). You may program three different Time Zone in the Access Code or Card No. (S1, S2, and S3). Set S1=0 if the Access Code or Card No. valid for 24 Hours.

**Step 5** Enter **Door (1=relay 1 (door 1), 2= relay 2 (door 2) or 3=both relay (door))** then press **<Tab>**

**Step 6** Enter **Name** (up to 12 characters) then press **[Enter]**

**Step 7** Return to step 2 to continue programming different access codes or click **[Save As]** to save the file, the file is saved under \*.ACD extension.

**Step 8** Type a file name and select a folder where you want to save the access codes database file then click **[Save]**.

**Step 9** Click **[Print]** to print or **[Quit]** to return to main screen.

## 4.2.2 Modifying an Existing Tenant Access Code

**Step 1** Click **File** menu and then click **Open Send File** as shown on figure 4.5.

**Step 2** Open an existing access code database file to be modified, click on the down arrow button to view the \*.ACD extension.

**Step 3** **Modify the access code database** consists of

- **Adding a new access code(s)**, input all information in the text box and press **[Enter]**, then save the file or
- **Edit an existing access code**, drag the mouse into the field need to be edited and type a new one. Make sure the format does not change (keep the same space between the fields), then save the file.

**Step 4** Click **[Print]** to print or **[Quit]** to return to main screen.

### 4.3.1 Creating an Auto Schedule Database

An Auto Schedule is composed of the following: Auto Schedule Number, Door (1 or 2), Begin Time, End Time, and Day of Week. You must follow the programming rules:

- Auto Schedule number must be 0-9 (10 Auto Schedules)
- Begin Time must be smaller than the End Time.
- Military time format must be used (i.e. 15:00 instead of 03:00 PM).
- Auto Schedules are only valid within a 24-hour period. If you want to program the auto schedule to be valid from Monday 06:00 to Tuesday 06:00, you have to divide the auto schedule into two: Monday 06:00-24:00 and Tuesday 00:00-06:00.

**Step 1** Click on **File** menu then select **New File** and select on **Auto Schedule Database** as shown on figure 4.1, then the screen shows as on figure 4.8.



Figure 4.8

**Step 2** Enter an **Auto Schedule No.** (0, 1, 2, ....or 9) then press **<Tab>**

**Step 3** Enter **1=Relay 1 (door 1) or 2= Relay 2 (door 2)** then press **<Tab>**  
**Note:** Do not select 3 for both, this number is not valid.

**Step 4** Enter **Begin Time** in military format (begin time must smaller than end time) then press **<Tab>**

**Step 5** Enter **End Time** in military format (end time must be greater than begin time) then press **<Tab>**

**Step 6** Enter **Day of Week** then press **[Enter]**

**1=Mon 2=Tue 3=Wed 4=Thu 5=Fri 6=Sat 7=Sun**  
i.e. **Enter 1 2 3 4 5 (Mon-Fri), Enter 6 7 (Sat-Sun)**

**Step 7** Return to step 2 to continue programming another auto schedule or click **[Save As]** to save the file, the file is saved under \*.ACD extension.

**Step 7** Type a file name and select a folder where you want to save the auto schedules database file then click **[Save]**.

**Step 8** Click **[Print]** to print or **[Quit]** to return to main screen.

## 4.3.2 Modifying an Existing Auto Schedule Database

**Step 1** Click **File** menu and then click **Open Send File** as shown on figure 4.5.

**Step 2** Open an existing auto schedule database file to be modified, click on a **down arrow button** to view the \*.ATS extension.

**Step 3** **Modify an auto schedule** consists of

- **Adding an auto schedule(s)**, input all information in the text box and press **[Enter]**, then save the file or
- **Edit an existing auto schedules**, drag the mouse into the field need to be edited and type a new one. Make sure the format does not change (keep the same space between the fields), then save the file.

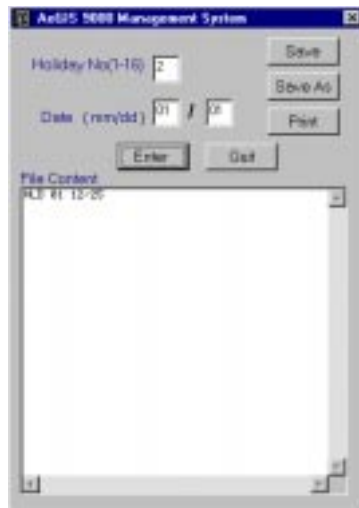
**Step 4** Click **[Print]** to print or **[Quit]** to return to main screen.

## 4.4.1 Creating a Holiday Database

A Holiday database is composed of the following: month and date. You must follow the programming rules:

- Holiday database must be 1-16 (16 holiday)
- Holiday database must be changed annually.
- Holidays are linked to auto schedules, time zones, access codes and cards. If the 12/25 is set as a holiday the auto schedules will be off and the access codes and cards will be disabled if set within Time Zone 1-9 on 12/25.

**Step 1** Click on **File** menu then select **New File** and select on **Holiday Database** as shown on figure 4.1, then the screen shows as on figure 4.9.



**Figure 4.9**

**Step 2** Enter Holiday No. (1-16) then press **<Tab>**

**Step 3** Enter Date (12/25) then press **[Enter]**

**Step 4** Return to step 2 to continue programming another holiday or click **[Save As]** to save the file, the file is saved under \*.HLD extension.

**Step 5** Type a file name and select a folder where you want to save the holiday file then click **[Save]**.

**Step 6** Click **[Print]** to print or **[Quit]** to return to main screen.

## 4.4.2 Modifying an Existing Holiday Database

**Step 1** Click **File** menu and then click **Open Send File** as shown on figure 4.5.

**Step 2** Open an existing holiday database file need to be modified, click on a **down arrow button** to view the \*.HLD extension.

**Step 3** **Modify a holiday** consists of

- **Adding a holiday(s)**, input all information in the text box and press **[Enter]**, then save the file or
- **Edit the existing holiday**, drag the mouse into the field need to be edited and type a new one. Make sure the format does not change (keep the same space between the fields), then save the file.

**Step 4** Click **[Print]** to print or **[Quit]** to return to main screen.

## 4.5.1 Creating the Time Zone Database

The Time Zone is composed of the following: Time Zone Number, Begin Time, End Time, and Day of Week. You must follow the programming rules:

- Time Zone number must be 1-9 (0 is reserved for 24 hours)
- Begin Time must be smaller than the End Time.
- Military time format must be used (i.e. 15:00 instead of 03:00 PM).
- Time Zones are only valid within a 24-hour period.
- Time Zones are linked to access codes and cards (see Access Code Database).
- Time Zones will be disabled if a holiday database is programmed on that day.

**Step 1** Click on **File** menu then select **New File** and select on **Time Zone Database** as shown on figure 4.1, then the screen shows as on figure 4.10.



**Figure 4.10**

**Step 2** Enter Time Zone No. (1-9) then press **<Tab>**

**Step 3** Enter Begin Time then press **<Tab>**

**Step 4** Enter End Time then press **<Tab>**

**Step 5** Enter **Day of Week** then press **[Enter]**

**1=Mon 2=Tue 3=Wed 4=Thu 5=Fri 6=Sat 7=Sun**  
i.e. **Enter 1 2 3 4 5 (Mon-Fri), Enter 6 7 (Sat-Sun)**

**Step 6** Return to step 2 to continue programming another time zone or click **[Save As]** to save the file, the file is saved under \*.TMZ extension.

**Step 5** Type a file name and select a folder where you want to save the time zone file then click **[Save]**.

**Step 6** Click **[Print]** to print or **[Quit]** to return to main screen.

## 4.5.2 Modifying an Existing Time Zone Database

**Step 1** Click **File** menu and then click **Open Send File** as shown on figure 4.5.

**Step 2** Open an existing time zone database file need to be modified, click on a **down arrow button** to view the \*.TMZ extension.

**Step 3** **Modify a time zone** consists of

- **Adding a time zone(s)**, input all information in the text box and press **[Enter]**, then save the file or
- **Edit an existing time zone**, drag the mouse into the field need to be edited and type a new one. Make sure the format does not change (keep the same space between the fields), then save the file.

**Step 4** Click **[Print]** to print or **[Quit]** to return to main screen.

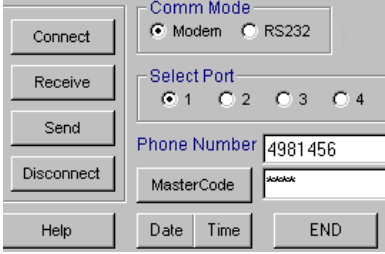
# Chapter 5

## UNDERSTANDING THE BUTTONS AND MENUS

**Send** to send the database and parameters to the AeGIS 9000 Series.

**Receive** to receive the database, event logs and parameters from the AeGIS 9000 Series.

Read all the function of each button and menu before you start any programming, sending or receiving the data from or to the AeGIS 9000 Series.

BUTTONS	FUNCTION
<p>Figure 5.1</p> 	<p><b>[Connect]</b> Click this button to connect to the AeGIS 9000 Series via modem or RS-232. The Received Content screen shows Connect 1200 NoEC or Connect 1200</p> <p><b>[Master Code]</b> Enter the AeGIS 9000 Series Master Code (default 0000) in the master code text box and click the <b>[Master Code]</b>, the Received Content screen shows <b>&lt;Programming&gt; Access Granted</b>. If the Received Content screen shows <b>&lt;Error&gt; ..Illegal Command..</b>, click the [Master Code] again. The master code is invalid if the screen <b>does not show &lt;Programming&gt; Access Granted</b>.</p> <p><b>[Receive]</b> Click this button to enable the buttons on <b>Receive Frame</b> (figure 5.4), then use the buttons to receive data from the AeGIS 9000 Series.</p> <p><b>[Send]</b> Click this button to enable the buttons on <b>Send Frame</b> (figure 5.3), then use the buttons to send data to the AeGIS 9000 Series.</p> <p><b>[Disconnect]</b> Click this button to disconnect. <b>Warning:</b> Click <b>[End]</b> button after sending the tenant database then click <b>[Disconnect]</b> after <b>..End Programming..</b> shows on the Received Content.</p> <p><b>[End]</b> This button is only use after sending the Tenant Database. It is not necessary to click <b>[END]</b> button after sending Access Code, Auto Schedules, Holiday, and Time Zone Database.</p> <p><b>[Help]</b> Is not enabled.</p> <p><b>Comm Mode</b> Select Modem or RS-232</p> <p><b>Select Port</b> Select Port 1-4.</p> <p><b>[Date]</b> Send the current PC date to the AeGIS 9000 Series.</p> <p><b>[Time]</b> Send the PC current time to the AeGIS 900 Series.</p>


## SEND BUTTONS

## FUNCTION

Figure 5.2

Figure 5.3

<b>Welcome Message</b>	Enter the welcome message up to 48 characters.
<b>[Message]</b>	Click this button to send the welcome message to the AeGIS 9000 Series.
<b>[DataBase]</b>	Click this button to send: <ul style="list-style-type: none"> <li>• Tenant Database</li> <li>• Access Code Database</li> <li>• Auto Schedule Database</li> <li>• Holiday Database</li> <li>• Time Zone Database</li> </ul> to the AeGIS 9000 Series.
<b>[Single]</b>	Click this button to set the AeGIS to single. By default the AeGIS 9000 Series is set for Single system.
<b>[Multi]</b>	Click this button to set the AeGIS 9000 Series to Multi. Each system must be set to multi if more than one systems are on the same phone line.
<b>[Pulse]</b>	Click this button to set the system to pulse. The system will dial in pulse mode. Do not set the system to pulse if the local provider does not support pulse dialing.
<b>[Tone]</b>	Click this button to set the system to tone. Default setting is tone.
<b>[NPBX]</b>	Click this button to disable PBX dialing.
<b>[PBX]</b>	Click this button to enable PBX dialing. <b>[PBX No]</b> button will be enabled. This feature is used to request an outside line before dialing the telephone number.
<b>[w/Cd]</b>	Click this button and you must use the card then the keypad code to gain access.
<b>[w/oCd]</b>	Click this button and you can use card or keypad code to gain access.
<b>[ClrAts]</b>	Click this button to clear all auto schedule database at the system. <b>Note:</b> The button does not delete the Auto Schedule Database File on your computer.
<b>[ClrTmz]</b>	Click this button to clear all time zone database at the system. <b>Note:</b> The button does not delete the Time Zone Database File on your computer.
<b>[ClrHid]</b>	Click this button to clear all holiday database at the system. <b>Note:</b> The button does not delete the Holiday Database File on your computer.
<b>[ClrEvr]</b>	Click this button to clear all event log in the buffer.
<b>[Clear Access Code]</b>	Enter the 4-digit code to be deleted in the text box or enter 0000 to clear all access codes in the system, click the <b>[clear Access Code]</b> or press <b>&lt;Enter&gt;</b> . <b>Note:</b> The button does not delete an individual access code or access code database file in your computer. You must delete them separately.

SEND BUTTONS	FUNCTION	
	<p>[Clear Tenant]</p> <p>[Card Fac.Code]</p> <p>[CallHoldTime]</p> <p>[Door1Opentime]</p> <p>[Door2Opentime]</p> <p>[LockOutCount]</p> <p>[SystemID]</p> <p>[ManuallUnlockDoor1]</p> <p>[ManuallUnlockDoor2]</p> <p>[Relay2Mode]</p> <p>[PBX No]</p> <p>[NewMasterCode]</p>	<p>Enter the 2, 3 or 4-digit code to be deleted in the text box or enter 0000 to clear all tenants in the system, click the <b>[clear Access Code]</b> or press <b>&lt;Enter&gt;</b>.  <b>Note:</b> The button does not delete an individual tenant or tenant database file in your computer. You must delete them separately.</p> <p>Enter the card reader facility code (000-255) in the text box and click <b>[Card Fac.Code]</b>.</p> <p>Enter the call hold time (010-240 seconds) in the text box and click <b>[CallHoldTime]</b> or press <b>&lt;Enter&gt;</b>.</p> <p>Enter the door 1 open time (04-99 seconds) in the text box and click <b>[Door1Opentime]</b> or press <b>&lt;Enter&gt;</b>.</p> <p>Enter the door 1 open time (04-99 seconds) in the text box and click <b>[Door2Opentime]</b> or press <b>&lt;Enter&gt;</b>.</p> <p>Enter the lock out count (1-9) in the text box and click <b>[LockOutCount]</b> or press <b>&lt;Enter&gt;</b>.</p> <p>Not applicable.</p> <p>Enter (01-98 hours or 99=indefinite time).</p> <p>Enter (01-98 hours or 99=indefinite time).</p> <p>Enter 1=Door Control, 2= A Shunt, 3= An Alarm Switch, 4= A CCTV Switch.</p> <p>Enter the number up to 5-digit. If the AeGIS 9000 Series is connected to the PBX extension port to dial out you have to get the outside line (PBX No) before dialing the actual phone number.</p> <p>Enter a new master code to replace the existing one.</p>
RECEIVE BUTTONS	FUNCTION	
 <p>Figure 5.4</p>	<p>[PAR]</p> <p>[TNT]</p>	<p>AeGIS 9000 Series parameters. Click this button and the system's parameters shows in the Received Content window.</p> <p>Click this button to receive the tenant database from the AeGIS 9000 Series. The database can be saved into a <b>file or display in the Received Content window.</b>  <b>To Save into a file:</b>  Click the <b>[TNT]</b>, a small window pops then type the file name then click <b>[Open]</b> and then click <b>[Please close log file after receiving]</b>, the database will be save into the file with TNT extension.  <b>To display in the Received Content window:</b>  Click the <b>[TNT]</b>, then a small window pops and click <b>[Cancel]</b>.</p>

RECEIVE BUTTONS	FUNCTION
	<p>[ACD] Click this button to receive the access code database from the AeGIS 9000 Series. The database can be saved into a <b>file</b> or <b>display in the Received Content window</b>.  <u>To Save into a file:</u>  Click the [ACD], a small window pops then type the file name then click [Open] and then click <b>[Please close log file after receiving]</b>, the database will be save into the file with ACD extension  <u>To display in the Received Content window:</u>  Click the [ACD], then a small window pops and click [Cancel].</p>
	<p>[ATS] Click this button to receive the Auto Schedule database from the AeGIS 9000 Series. The database can be saved into a <b>file</b> or <b>display in the Received Content window</b>.  <u>To Save into a file:</u>  Click the [ATS], a small window pops then type the file name then click [Open] and then click <b>[Please close log file after receiving]</b>, the database will be save into the file with ATS extension.  <u>To display in the Received Content window:</u>  Click the [ATS], then a small window pops and click [Cancel].</p>
	<p>[HLD] Click this button to receive the holiday database from the AeGIS 9000 Series. The database can be saved into a <b>file</b> or <b>display in the Received Content window</b>.  <u>To Save into a file:</u>  Click the [HLD], a small window pops then type the file name then click [Open] and then click <b>[Please close log file after receiving]</b>, the database will be save into the file with HLD extension.  <u>To display in the Received Content window:</u>  Click the [HLD], then a small window pops and click [Cancel].</p>
	<p>[TMZ] Click this button to receive the time zone database from the AeGIS 9000 Series. The database can be saved into a <b>file</b> or <b>display in the Received Content window</b>.  <u>To Save into a file:</u>  Click the [TMZ], a small window pops then type the file name then click [Open] and then click <b>[Please close log file after receiving]</b>, the database will be save into the file with TMZ extension.  <u>To display in the Received Content window:</u>  Click the [TMZ], then a small window pops and click [Cancel].</p>
	<p>[EVR] Click this button to receive the event log from the AeGIS 9000 Series. The database can be saved into a <b>file</b> or <b>display in the Received Content window</b>.  <u>To Save into a file:</u>  Click the [EVR], a small window pops then type the file name then click [Open] and then click <b>[Please close log file after receiving]</b>, the database will be save into the file with EVR extension.  <u>To display in the Received Content window:</u>  Click the [HLD], then a small window pops and click</p>

RECEIVE BUTTONS	FUNCTION																		
	<p>[Cancel].</p> <p><b>Events Report Descriptions</b></p> <p><b>03/12 2002 13:11 Visitor Phone 00001 Access Granted</b>  <b>Description:</b> Door 1 or 2 is unlocked remotely by the tenant pressing 9 or 8.</p> <p><b>03/12 2002 13:01 Postal Unlock 00000 Access Granted</b>  <b>Description:</b> Door is unlocked via postal key.</p> <p><b>03/12 2002 13:01 Auto-Lock 00210 Scheduled action</b>  <b>Description:</b> Door 2 is locked via Auto Schedule timer.</p> <p><b>03/12 2002 13:00 Auto-Lock 00110 Scheduled action</b>  <b>Description:</b> Door 1 is locked via Auto Schedule timer</p> <p><b>03/12 2002 09:00 Auto-Unlock 00110 Scheduled action</b>  <b>Description:</b> Door 1 is unlocked via Auto Schedule timer</p> <p><b>03/12 2002 09:00 Auto-Unlock 00210 Scheduled action</b>  <b>Description:</b> Door 2 is unlocked via Auto Schedule timer</p> <p><b>03/12 2002 09:05 Card (Door 1) 51456 Access Granted</b>  <b>Description:</b> Door 1 is unlocked via card or keyfob transmitter.</p> <p><b>03/12 2002 09:03 Card (Door 2) 51456 Access Granted</b>  <b>Description:</b> Door 2 is unlocked via card or keyfob transmitter 51456.</p> <p><b>03/12 2002 09:00 Card Reader 51455 Denied, bad Code</b>  <b>Description:</b> Card or keyfob transmitter 51455 is denied.</p> <p><b>03/12 2002 08:55 Access(Door 1) 00750 Access Granted</b>  <b>Description:</b> Door 1 is unlocked via keypad code 0750</p> <p><b>03/12 2002 08:53 Access(Door 2) 00850 Access Granted</b>  <b>Description:</b> Door 2 is unlocked via keypad code 0850</p> <p><b>03/12 2002 07:35 Satellite KPD 1 1234 Access Granted</b>  <b>Description:</b> Access granted by satellite keypad, card reader or transmitter #1.</p> <p><b>03/12 2002 07:34 Satellite KPD 3 0001 Access Denied</b>  <b>Description:</b> Access granted by satellite keypad, card reader or transmitter #3.</p>																		
FILE MENU	FUNCTION																		
<table border="1"> <tr> <td>New File</td> <td>Tenant Database</td> </tr> <tr> <td>Open Send File</td> <td>Access Code Database</td> </tr> <tr> <td>Open LOG File</td> <td>Auto Schedule Database</td> </tr> <tr> <td>Close LOG File</td> <td>Holiday Database</td> </tr> <tr> <td>Save Parameter</td> <td>Time Zone Database</td> </tr> <tr> <td>Open Parameter</td> <td></td> </tr> <tr> <td>Save Received File</td> <td></td> </tr> <tr> <td>Print Received File</td> <td></td> </tr> <tr> <td>Close</td> <td></td> </tr> </table>	New File	Tenant Database	Open Send File	Access Code Database	Open LOG File	Auto Schedule Database	Close LOG File	Holiday Database	Save Parameter	Time Zone Database	Open Parameter		Save Received File		Print Received File		Close		<p><b>New File:</b> See Chapter 4.</p> <p><b>Open Send File:</b> See Chapter 4.</p> <p><b>Save Parameter:</b> Not Applicable.</p> <p><b>Open Parameter:</b> Not Applicable.</p> <p><b>Save Received File:</b> Save all received data in Received Content window.</p> <p><b>Print Received File:</b> Print all received data in the Received Content window.</p> <p><b>Close:</b> Close program</p>
New File	Tenant Database																		
Open Send File	Access Code Database																		
Open LOG File	Auto Schedule Database																		
Close LOG File	Holiday Database																		
Save Parameter	Time Zone Database																		
Open Parameter																			
Save Received File																			
Print Received File																			
Close																			

FILE MENU	FUNCTION
<p><u>E</u>dit</p> <p>Cut</p> <p><u>C</u>opy Ctrl+C</p> <p><u>P</u>aste Ctrl+V</p>	<p>Cut: Delete the data and save into a clip board to be pasted.</p> <p>Copy: Save the data into a clip board to be pasted.</p> <p>Paste: Paste the data.</p>
SETTING MENU	FUNCTION
	<p>Modem setting, see chapter 3.</p>

