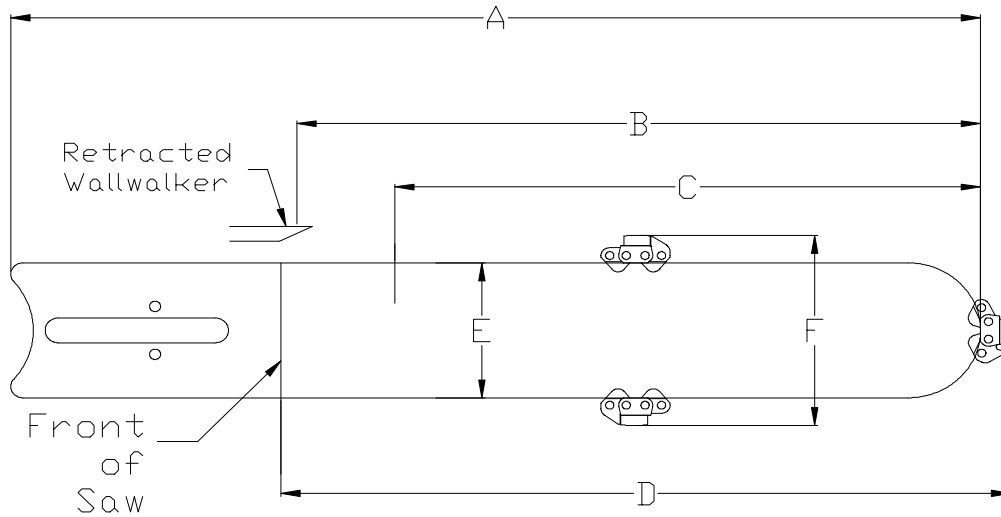


# BAR DIMENSIONS and Cutting Depths



Saw	Bar		Called Length	Overall Length	A	B <b>Practical Cutting Depth</b>	C SpeedHook Cutting Depth	D Ultra-Maximum Cutting Depth	E Bar Width	F Cutting Width
	Part Number	Segs								
823H	72269, 70192	28	11	15.5		<b>9.3</b>	6.3	10.5	2.95	4.2
853Pro	72176, 70198	33	15	19.2		<b>13.0</b>	10.0	14.2	2.95	4.2
853ProPlus	72177, 70223	39	19	23.5		<b>17.3</b>	14.3	18.5	2.95	4.2
	70646	47	24	29.5		<b>23.3</b>	20.3	24.5	2.95	4.2
633GC/	73600	32	14	19.5		<b>14.0</b>	13.0	16	2.95	4.2
623G	71600	35	16	21.7		<b>16.2</b>	15.2	18.2	2.95	4.2
814	74042	25	13	15.0		<b>11.7</b>	8.5	12.6	2.25	3.5
613GC	70610	29	12	17.6		<b>11.9</b>	n/a	14.1	2.95	4.2

- 1) New Chain
- 2) All values in inches
- 3) Cutting depths will increase up to one inch as chain stretches
- 4) For perfectly square corners on backside of cut, subtract 1.5 inches from "B" or "C". (1.1 for Mini saws)