

Model

402/422



Model 402



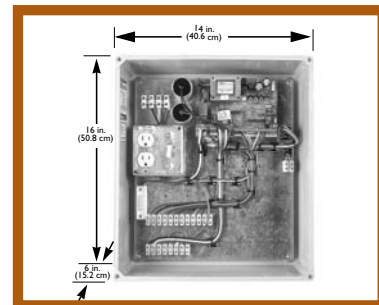
Model 422

## Model 402/422 Hydraulic Swing Gate Operators



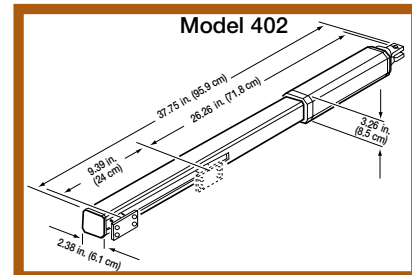
Model 402/422 operators are controlled by the 450 MPS Control Panel.

- \* One 450 MPS operates single leaf or bi-parting gates
- \* Choice of 6 operating modes including:
  - "pulse-to-open, pulse-to-close"
  - automatic timed closure, including **NEW HOLD OPEN** function
  - "man present" (separate open and close contacts)
- \* Easy interconnection of loop detectors, photocells, etc. to reverse a gate if an obstacle is sensed
- \* Easy interconnection of actuating devices like remote control radios, key pads and telephone entry systems
- \* On-board diagnostic LEDs
- \* Concealed positive gate stops available

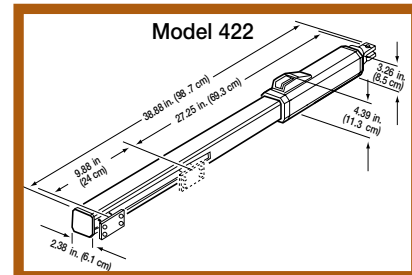


Model 450 MPS Control Panel and fiberglass enclosure (cover not shown)

Parameter	Model 402 Standard	Model 422 Standard
Application	Single family residence, single leaf or bi-parting gate (vehicles only, not for pedestrian use) (not recommended for solid gates)	
Cycles per hour	30	30
Maximum gate swing	90 degrees	90 degrees
90 degree opening time	12 seconds	12 seconds
Maximum weight per gate leaf	900 pounds (410 kg)	900 pounds (410 kg)
Maximum length per gate leaf	10 feet (3 m)	10 feet (3 m)
Approx. operating temperature range	-33°F to 165°F (-36°C to 74°C) (For extreme temperature conditions, arctic grade fluid is available upon request)	
Hydraulic locking	Available in opened or closed positions	Available in opened and/or closed positions
Voltage	115 VAC (2.5 A) or 230 VAC (1.5 A)	



The 402 dimensions



The 422 dimensions



Note: Operator specifications are approximate. Environmental factors can change the performance of the operator. Your installer will advise you which model of operator will work best for your site and application.

FAAC is the world's largest specialized manufacturer of operators for barrier, slide and swing gate systems.

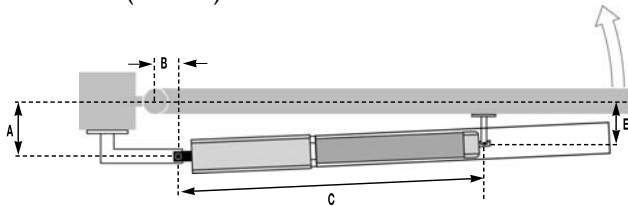
# The FAAC 402 & 422 Residential Operators



## Mounting dimensions for OUTWARD-swinging 402 operators, top view

### Dimensions

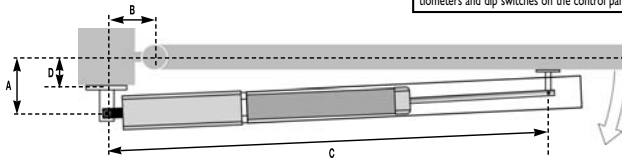
- A 4.5 in. (11.4 cm)      C 26.5 in. (67.3 cm)  
 B 4.5 in. (11.4 cm)      E MUST be less than A



## Mounting dimensions for INWARD-swinging 402 operators, top view

### Dimensions

- A 4.5 in. (11.4 cm)  
 B 4.5 in. (11.4 cm)  
 C 35.5 in. (90.2 cm)  
 D If greater than 2 in. (5 cm) construct a recess liner.  
 E MUST be less than A



UL Class 325 Descriptions & FAAC Operators			
Class	FAAC Models	Duty Cycle	Typical Use
Class 1	Residential vehicular gate operator 400, 402, 422, 750, 760, 620, 640, 412	Limited duty	*Home use *Small apartment building, up to 4 units per building, limited public access
Class 2	Commercial/General access vehicular gate operator 400, 620, 640	Continuous duty	*Apartment buildings *Open public access
Class 3	Industrial/Limited access vehicular gate operator 400, 620, 640	Continuous Duty	*No public access
Class 4	Restricted Access vehicular gate operator 620, 640	Continuous Duty	*Prison related security

### Model 402 & 422 Kits include:

- One or two hydraulic gate operators with mounting hardware
- One 450 MPS control panel
- One 14 x 16 in. weather resistant UL Listed fiberglass enclosure
- Two photobeam sets for opening and closing reversing devices
- One or two manual release keys
- One plug-in radio receiver
- Two radio transmitters
- 115 VAC receptacle for accessories (5 amp max)
- ON/OFF switch controlling power to control panel, accessories and plug outlet
- Pre-wired for dual photobeams – open and closing reversing devices
- Pre-wired motors to terminal strip
- Pre-wired Open/Hold Open contacts
- Test button
- Two or four warning signs

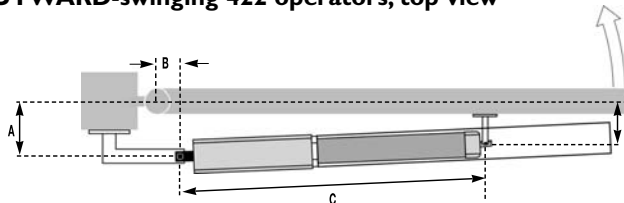
### What the pre-wired system means to an installer:

The pre-wiring system is basically an extension of the control panel. Larger, easier-to-work-with terminal strips are wired from the control panel to locations on the enclosure backplate. When installing, power is run to a terminal strip; motor wires are run to a terminal strip; peripherals (like photobeams) are run to a terminal strip. Each strip has a wiring "map" to ensure easy connections. Anything external has a terminal provided. There is no need to wire anything to the control panel itself. Once connected, all that remains is the fine-tuning of various potentiometers and dip switches on the control panel, and the installation is complete.

## Mounting dimensions for OUTWARD-swinging 422 operators, top view

### Dimensions

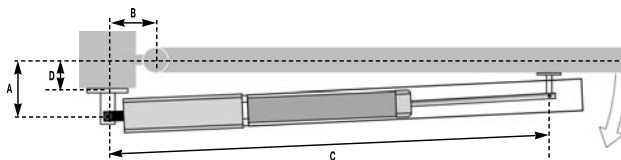
- A 4.75 in. (12 cm)  
 B 4.75 in. (12 cm)  
 C 27 in. (68.6 cm)  
 E MUST be less than A



## Mounting dimensions for INWARD-swinging 422 operators, top view

### Dimensions

- A 4.75 in. (12 cm)  
 B 4.75 in. (12 cm)  
 C 36.63 in. (93 cm)  
 D max 2.75 in. (7 cm)  
 E MUST be less than A



For more information, visit our web site at [www.faacusa.com](http://www.faacusa.com), or call 1-800-221-8278.



LIT-402/422REV-5/01