

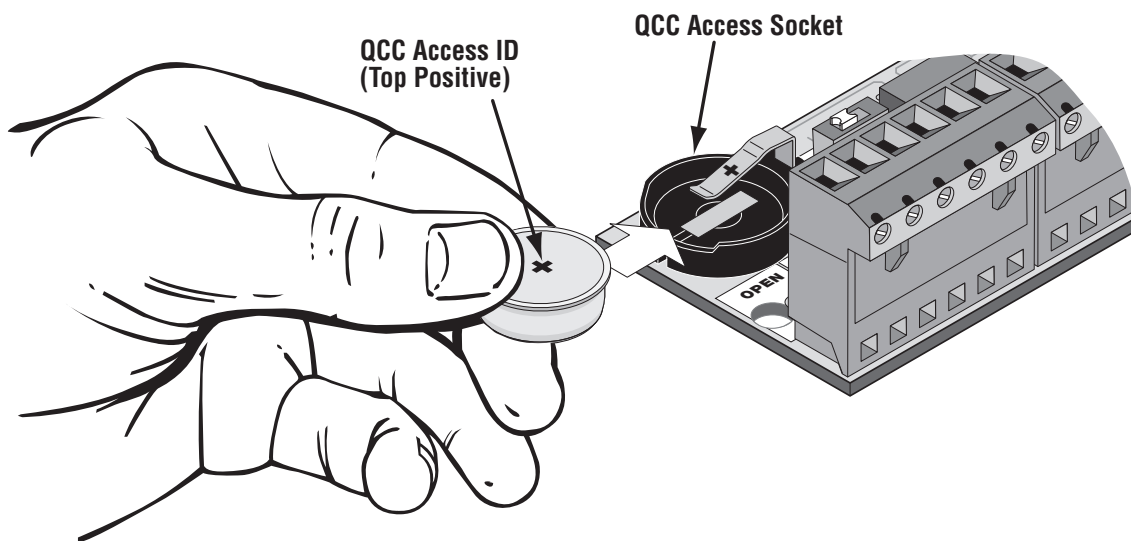
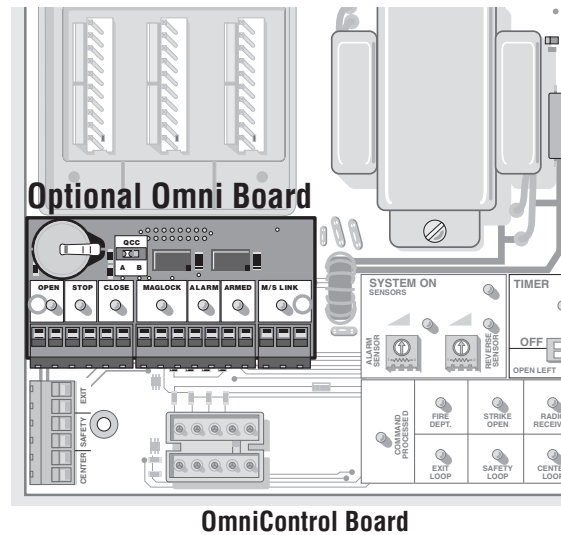
# QCC Quick Close Curcuit for Slide Gate Operators Only

## Requirements

- A) Vehicular Slide Gate Operator with OmniControl board
- B) Optional Omni board
- C) QCC access ID
- D) Safety Loop

## Installation

1. Turn the gate operator electrical **power off**
2. Turn the **timer on** at the Omni control board
3. Insert the optional Omni board into the OmniControl board at **J2**
4. Insert the QCC access **ID into the QCC socket**
5. Select the desired function of the QCC operation.



## Mode of Operations

The QCC can operate in two different modes. The mode of operation will depend on the switch setting on the optional Omni board.

### Mode A (switch to left)

If the gate is closing while a car is driving over the safety loop detector, the QCC will stop the gate for a second then open the gate while the car is over the safety loop detector. As soon as the car leaves the safety loop, the QCC will resume closing the gate.

### Mode B (switch to right)

If the gate is closing, and a vehicle drives over the safety loop, the QCC will stop the gate. It will not open the gate. After the vehicle leaves the safety loop, the QCC will close the gate.

### Mode of Operation Switch

