



Cable Rollers

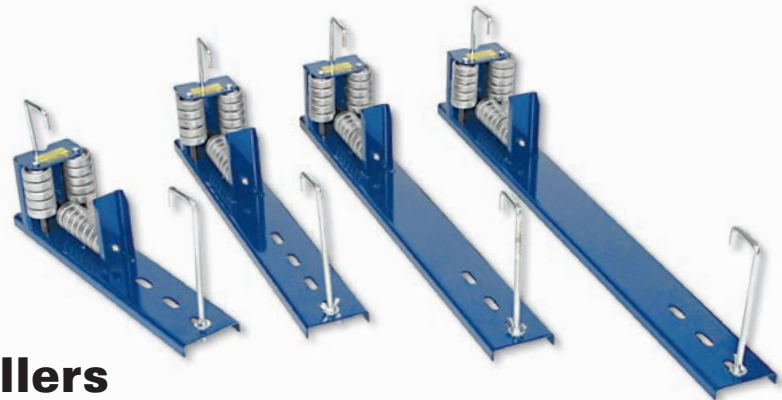
- Installs through bottom of tray for easy removal after installation
- Welded steel frames
- Length adjustment slots
- Long life steel ball bearing rollers
- Each roller supplied with 2 each J-hooks and hardware

*Two styles –
Straight and Radius*



Straight Cable Rollers

Catalog Number	Description	Weight
9518SR	Straight Cable Roller for 12"-18" Tray	7.5 lbs.
9524SR	Straight Cable Roller for 20"-24" Tray	9 lbs.
9530SR	Straight Cable Roller for 24"-30" Tray	12.5 lbs.
9536SR	Straight Cable Roller for 30"-36" Tray	14.5 lbs.



Radius Cable Rollers

Catalog Number	Description	Weight
9518RR	Radius Cable Roller for 12"-18" Tray	10 lbs.
9524RR	Radius Cable Roller for 20"-24" Tray	10.5 lbs.
9530RR	Radius Cable Roller for 24"-30" Tray	12 lbs.
9536RR	Radius Cable Roller for 30"-36" Tray	13 lbs.



SHEAVES & CABLE ROLLERS

Right Angle Rollers

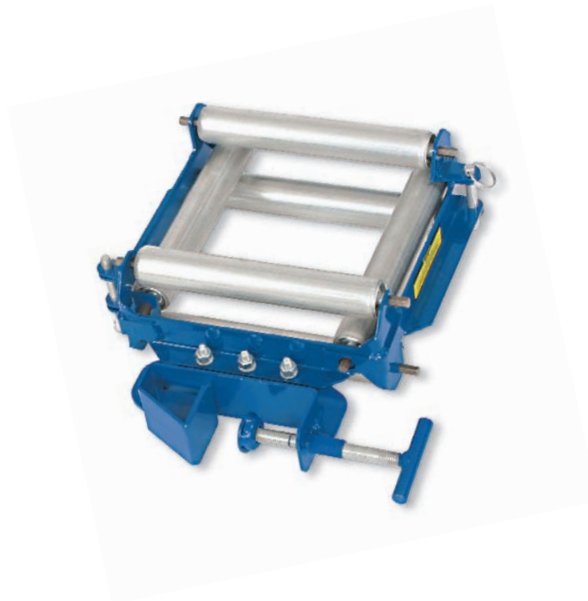
- Welded steel frames
- Long life steel ball bearing rollers
- Easy set-up



Catalog Number	Description/Size	Weight
95024RA	90° Right Angle Rollers - 24" Radius	41 lbs.
95036RA	90° Right Angle Rollers - 36" Radius	53 lbs.

Four-Sided Roller with Clamp

- Designed for multi-directional pulling
- Easily clamps to most styles of cable tray
- Low friction rollers for ease of pulling
- Quick release pin for fast loading/unloading of cable
- 6" opening



Catalog Number	Description	Weight
9546	Four Side Roller – 6" Capacity – 100 lbs.	9.5 lbs.

